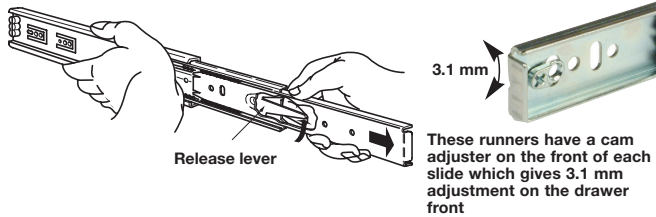
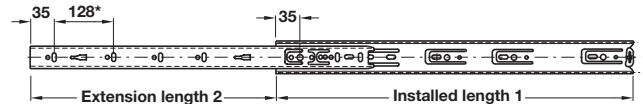
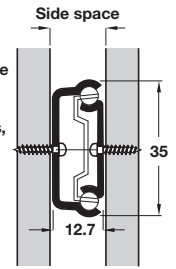


## Accuride 2132 and 2132DO drawer runners, single extension



For optimum performance allow between +0.2mm and +0.5mm over the nominal runner thickness, for the runner space.



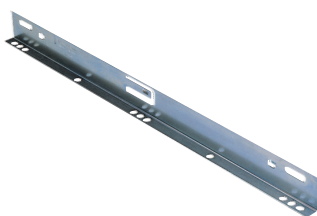
\* The dimension is 96 on the 250 mm and 300 mm lengths

- > Side mounting
- > For desk pedestals and general storage drawers
- > Load carrying capacity up to 35 kg (see below for individual runner capacity)
- > Front disconnect (by depressing lever) for drawer removal
- > Hold-in feature holds the closed drawer in
- > Hold-out feature holds the drawer in the open position
- > 32 mm and universal hole pattern
- > Tolerance absorption tabs
- > Silent movement
- > Bright or black zinc-plated steel
- > Optional mounting brackets shown below, for bottom or shelf mounting
- > Order fixing screws separately (max. head height 2.5 mm, Ø 9.6 mm)
- > Order qty: 1 pair

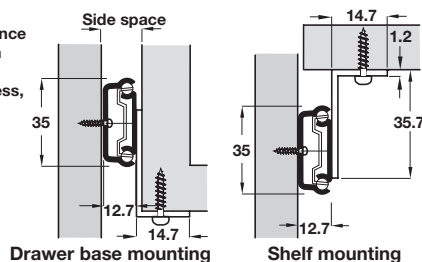


Installed length	Extension length	Load capacity	Bright		Bright
			Accuride 2132 Hold-in feature	Black	Accuride 2132DO Hold-out feature
250 mm	163 mm	35 kg	422.40.925	422.40.325	-
300 mm	205 mm	35 kg	422.40.930	422.40.330	422.37.930
350 mm	260 mm	35 kg	422.40.935	422.40.335	422.37.935
400 mm	281 mm	35 kg	422.40.940	422.40.340	422.37.940
450 mm	331 mm	35 kg	422.40.945	422.40.345	422.37.945
500 mm	376 mm	34 kg	422.40.950	422.40.350	422.37.950
550 mm	415 mm	33 kg	422.40.955	422.40.355	422.37.955
600 mm	451 mm	32 kg	422.40.960	422.40.360	422.37.960
650 mm	488 mm	31 kg	422.40.965	422.40.365	422.37.965
700 mm	526 mm	30 kg	422.40.970	-	422.37.970

## Mounting brackets



For optimum performance allow between +0.2mm and +0.5mm over the nominal runner thickness, for the runner space.



- > Carrying capacity as per runner
- > Optional full length right-angle bracket
- > Easily clips onto runner
- > For bottom mounting of drawers or, when inverted, for platform mounting of shelves
- > Bright, black or white zinc-plated steel
- > Order qty: 1 pair

To suit runner length	Bright	Black	White
400 mm	422.42.940	422.42.340	422.42.740
450/600/650 mm	422.42.945	422.42.345	422.42.745
500 mm	422.42.950	422.42.350	422.42.750
550 mm	422.42.955	422.42.355	422.42.755