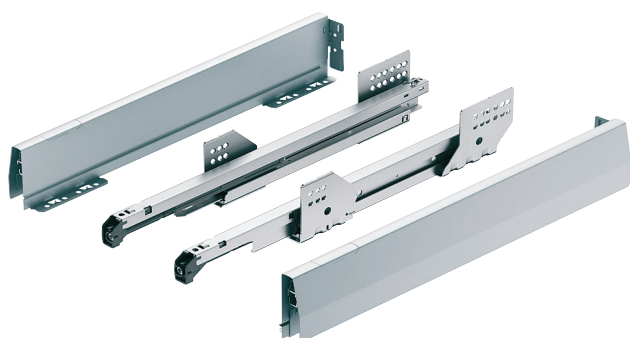


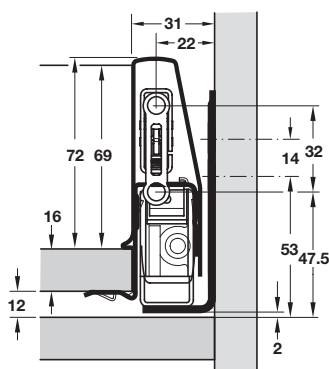
MX 50 KG STANDARD DRAWER SETS

Standard drawer, 92 mm high.

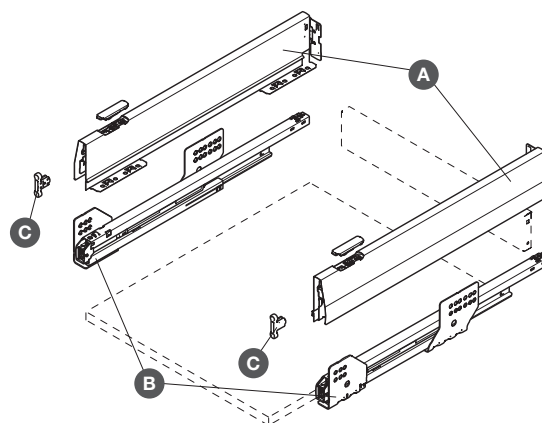
NEW



- > Quick to assemble and install
- > Standard drawer suits either 16 or 18 mm drawer base and rear panel
- > Synchronised runners are full extension with Smuso integrated soft and self-closing mechanism on both sides
- > Vertical inner sides for optimum capacity
- > Drawer fronts can be adjusted from above by means of the front fixing bracket, neatly concealed by a trim cap
- > Drawer fronts can be removed without tools
- > Each set includes:
 - A 1 pair drawer sides
 - B 1 pair runners
 - C 2 front fixing brackets, screw fixing
- > MX standard drawer sides, 92 mm high
 - With integrated rear panel holder, requires 16 or 18 mm drawer base and rear panel (not included)
 - Plastic cover caps included
 - Powder coated steel
- > Full extension synchronised runners
 - Load carrying capacity 50 kg per pair
 - With integrated Smuso soft-closing and self-closing mechanisms
 - Galvanized steel
- > Order fixing screws separately
- > Order qty: Multiples of 6 sets



Installation information is shown on page 24



MX 50 kg standard drawer set, grey



- > Suits 16 mm drawer base and rear panel
- > Grey powder coated drawer sides
- > Order qty: Multiples of 6 sets

smuso



Length	Cat. No.
270 mm	551.54.560
350 mm	551.54.562
400 mm	551.54.563
450 mm	551.54.564
500 mm	551.54.565

MX 50 kg standard drawer set, white



- > Suits 16 mm drawer base and rear panel
- > White powder coated drawer sides
- > Order qty: Multiples of 6 sets

smuso



Length	Cat. No.
270 mm	551.54.760
350 mm	551.54.762
400 mm	551.54.763
450 mm	551.54.764
500 mm	551.54.765

MX 50 kg standard drawer set, anthracite



- > Suits 18 mm drawer base and rear panel
- > Anthracite powder coated drawer sides
- > Order qty: Multiples of 6 sets

smuso



Length	Cat. No.
270 mm	551.54.330
350 mm	551.54.332
400 mm	551.54.333
450 mm	551.54.334
500 mm	551.54.335

MX 50 kg standard drawer set, silver



- > Suits 18 mm drawer base and rear panel
- > Silver powder coated drawer sides
- > Order qty: Multiples of 6 sets

smuso



Length	Cat. No.
270 mm	551.54.930
350 mm	551.54.932
400 mm	551.54.933
450 mm	551.54.934
500 mm	551.54.935

MX 50 kg standard drawer set, bronze



- > Suits 16 mm drawer base and rear panel
- > Bronze powder coated drawer sides
- > Order qty: Multiples of 6 sets

smuso



Length	Cat. No.
270 mm	551.54.160
350 mm	551.54.162
400 mm	551.54.163
450 mm	551.54.164
500 mm	551.54.165

YOU ALSO NEED:



DRAWER BACKS & BASES
Pages 54-55 (16 mm only)



FIXING SCREWS
Pages 468-470



OPTIONAL ACCESSORIES
Pages 30-53