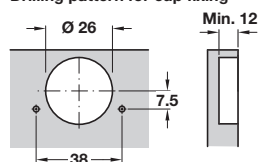


HÄFELE 95° MINI HINGES



- > Opening angle 95°, Ø 26 mm cup
- > Screw fixing cup
- > Keyhole fixing arm
- > For door thickness up to 22 mm see table below
- > Full overlay mounting steel cup and hinge arm
- > Order fixing screws separately
- > Not soft close compatible
- > Order qty: 1 pc

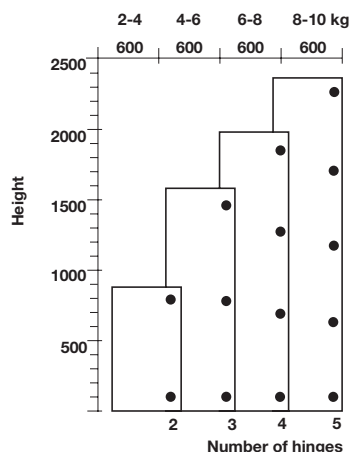
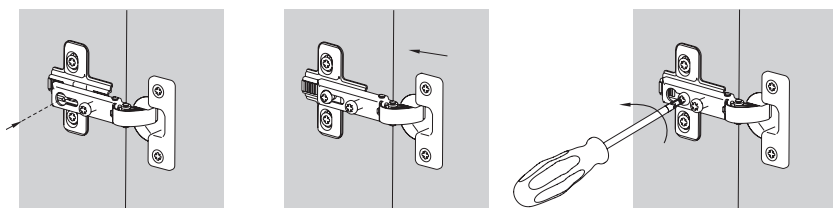
Drilling pattern for cup fixing



Key-hole system

- Miniprimat series
- Special hinges

The hinge is assembled on the mounting plate inserting the fixing screw on the appropriate hole on the hinge arm. After adjusting the door depth, the mounting procedure is finished by tightening the fixing screw.

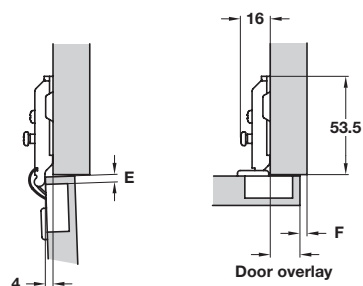


Häfele mini hinges

Minimum gap for doors with chamfered edges (r = 1 mm) with factory setting

Door thickness mm	Distance to cup E mm		
	3.0	4.0	5.0
16	0.3	0.3	0.3
17	0.5	0.5	0.5
18	0.7	0.7	0.7
19	1.0	0.9	0.9
20	1.3	1.2	1.2
21	1.7	1.6	1.5
22	2.5	2.1	2.0
Minimum gap F			

Full overlay mounting



Door overlay mm								
12.5	13.5	14.5	15.5	16.5	17.5	18.5	19.5	
			3	4	5	6	7	0
3	4	5	6	7				3
Distance to cup E mm					Mounting plate height mm			



Fixing

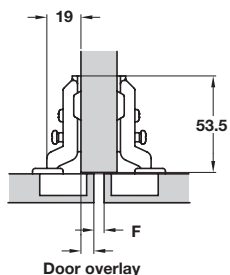
Screw fixing

Keyhole fixing

312.40.500



Half overlay mounting



Door overlay mm								
3.5	4.5	5.5	6.5	7.5	8.5	9.5	10.5	
			3	4	5	6	7	0
3	4	5	6	7				3
Distance to cup E mm					Mounting plate height mm			



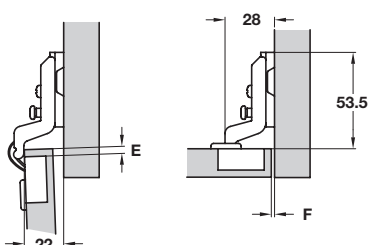
Fixing

Keyhole fixing

Screw fixing

312.40.501

Inset mounting



Door thickness mm								
13	14	15	16	17	18	19	20	
3	3	3	3	3				2
4/5	4/5	4/5	4	4				3
7	7	7						6
Distance to cup E mm					Mounting plate height mm			

Dimensions given are using a 3 mm mounting plate



Fixing

Keyhole fixing

Screw fixing

312.40.502

YOU ALSO NEED:



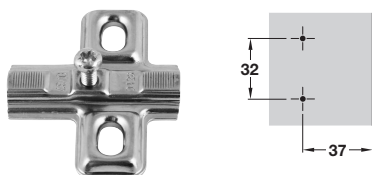
MOUNTING PLATES
Page 328



FIXING SCREWS
Page 468

OPTIONAL ACCESSORIES
Pages 403-417

Keyhole mounting plate for Häfele concealed mini hinges and refrigerator hinge



- > Hospa screw fixing
- > For use with mini hinges and refrigerator hinge
- > One part plate with ± 2 mm height adjustment via slots
- > Nickel-plated steel
- > Order fixing screws separately
- > Order qty: 1 pc



Height

Hospa screw

0 mm

312.46.510



A wider range of mounting plates are shown on pages **328**