

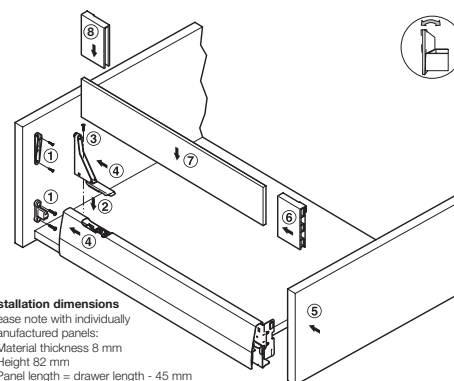
# DECORATIVE SIDES FOR MX DRAWERS

Clear glass side panels for drawers 92 mm high, increases inner drawer height by 85 mm.

**NEW**

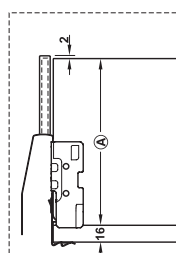


- > MX glass side panels are held in place by glass panel holder set, with tension spring for fixing, and as clatter prevention for the glass panel
- > Brackets screw fix to drawer front panel and rear panel, cover caps and glass holders clip fix from rear
- > Tilting angle of the drawer front panel can be adjusted using slotted screw

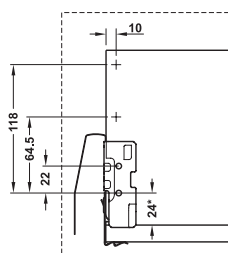


**Installation dimensions**  
Please note with individually manufactured panels:

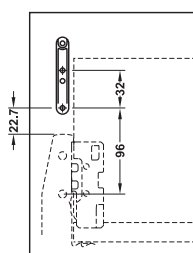
- Material thickness 8 mm
- Height 82 mm
- Panel length = drawer length - 45 mm



Rear panel height H



Drilling pattern for rear panel fitting



Drilling pattern/screw-on position for front brackets

**YOU ALSO NEED:**



**MX STANDARD DRAWER SET**  
Page 26-29

## MX glass side panels

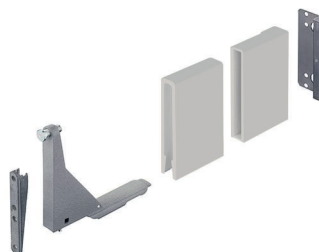


- > Edges sanded and bevelled
- > 82 mm high
- > 8 mm thick toughened glass
- > Order qty: 1 pair

**PART NUMBERS REMOVED**  
**553.60.423**  
**553.60.123**

| For drawer length | Clear glass | Satin-finish glass |
|-------------------|-------------|--------------------|
| 450 mm            | 553.60.424  | 553.60.124         |
| 500 mm            | 553.60.425  | 553.60.125         |

## MX glass panel holder set



- > Must be ordered separately for use with glass side panels
- > Set consists of:
  - 2x Front brackets for screw fixing
  - 2x Glass panel holders with tension spring, adjusting screw for front bracket and insert for MX drawer sides
  - 2x Cover caps
  - 2x Rear glass panel holders
  - 2x Rear panel fittings
- > Order qty: 1 set

| Finish              | Cat. No.   |
|---------------------|------------|
| Metallic grey       | 553.60.299 |
| White               | 553.60.699 |
| Metallic silver     | 551.60.599 |
| Metallic anthracite | 551.60.999 |
| Metallic bronze     | 551.60.199 |

PAGE AMENDED  
**02.11.16/2**