

# TIOMOS 160° SOFT CLOSE HINGES



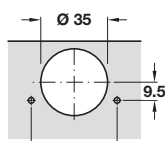
- > Zero protrusion makes this ideal for cabinets with internal drawer boxes or pull-out shelves
- > Opening angle 160° (can be restricted to 120°, see page 367 for details), Ø 35 mm cup
- > For door thickness up to 32 mm (for door thicknesses over 29 mm, a trial fitting is recommended)
- > Up to 24 mm overlay using full overlay plus hinge (see page 343)
- > With finger protection
- > Available with integrated soft close
- > Screw, dowel or Impresso (quick fix) fixing cup
- > Shallow cup drilling depth only 10 mm
- > Click on arm
- > Zinc alloy cup and hinge arm
- > Order fixing screws separately
- > Order qty: 1 pc

Tiomos 160°

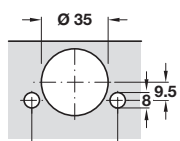
Door thickness mm	Distance to cup E mm							
	3.0	4.0	5.0	6.0	7.0	8.0	9.0	10.0
16-28	0.0	0.0	0.0	0.0	0.0	0.0	0.0	0.0
29	0.2	0.2	0.2	0.2	0.2	0.2	0.2	
30	0.2	0.2	0.2	0.2	0.2			
31	0.2	0.2	0.2	0.2				
32	0.2	0.2						
Minimum gap F								

Note: 29-32 mm requires 120° reducer clip

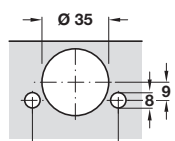
Drilling pattern for cup fixing



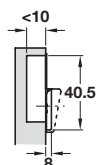
Drilling pattern for screw fixing



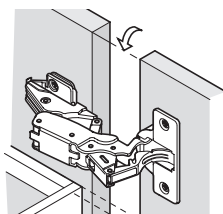
Dowel/Impresso tool free fixing



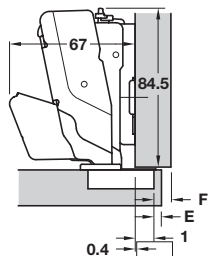
Impresso tool free fixing also suits above



Zero protrusion for application with inset drawers



## Full overlay mounting



Can also be used for inset mounting if 19 or 21 mm mounting plates are used. Set mounting plate back by door thickness + 1.5 mm (see right).

Door overlay mm for full overlay

13	14	15	16	17	18	19	20	21	22	
		3	4	5	6	7	8	9	10	0
3	4	5	6	7	8	9	10			2

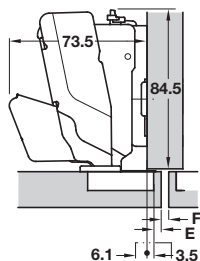
Distance to cup E mm

Mounting plate height mm



Soft close	Screw fixing	Impresso	Dowel
With	348.32.801	348.32.831	348.32.811
Without	348.32.601		

## Half overlay/twin mounting



### Door overlay mm

6.5	7.5	8.5	9.5	10.5	11.5	12.5	13.5	14.5	15.5
-----	-----	-----	-----	------	------	------	------	------	------

			3	4	5	6	7	8	9	10	0
--	--	--	---	---	---	---	---	---	---	----	---

3	4	5	6	7	8	9	10				2
---	---	---	---	---	---	---	----	--	--	--	---

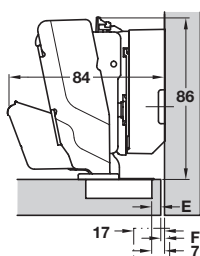
Distance to cup E mm

Mounting plate height mm



Soft close	Screw fixing	Impresso
With	348.32.802	348.32.832
Without	348.32.602	-

## Inset mounting



### Door gap mm for inset mounting

	4	3	2	1	0	
--	---	---	---	---	---	--

					3	4	19
--	--	--	--	--	---	---	----

		3	4	5	6		21
--	--	---	---	---	---	--	----

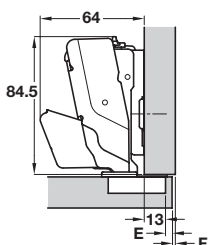
Distance to cup E mm

Mounting plate height mm



Soft close	Screw fixing	Impresso
With	348.32.800	348.32.830
Without	348.32.600	-

## Full overlay plus



### Door overlay mm

15	16	17	18	19	20	21	22	23	24
----	----	----	----	----	----	----	----	----	----

			3	4	5	6	7	8	9	0
--	--	--	---	---	---	---	---	---	---	---

3	4	5	6	7	8	9	10			2
---	---	---	---	---	---	---	----	--	--	---

Distance to cup E mm

Mounting plate height mm

\*door overlay from 24 mm, use mounting plate 348.38.560



Soft close	Screw fixing	Impresso
With	348.32.800	348.32.830
Without	348.32.600	-

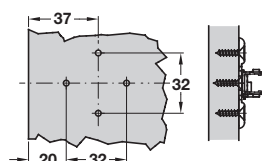
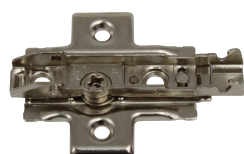
## YOU ALSO NEED:

**MOUNTING PLATES**  
Pages 364-366

**FIXING SCREWS**  
Page 468

**OPTIONAL ACCESSORIES**  
Pages 367-368, 403-417

## Cruciform mounting plate, 4 point fixing



A wider range of mounting plates are shown on pages **364-366**

- > For TIOMOS click on fixing hinges only
- > Hospa screw fixing
- > Two part plate with  $\pm 2$  mm height adjustment via worm screw
- > Nickel-plated steel
- > Order fixing screws separately
- > Order qty: 1 pc

**BEST SELLER**



Height	Hospa screw
0 mm	348.38.511