

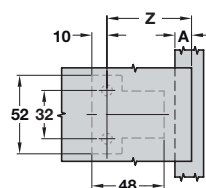
TIOMOS M0

NEW



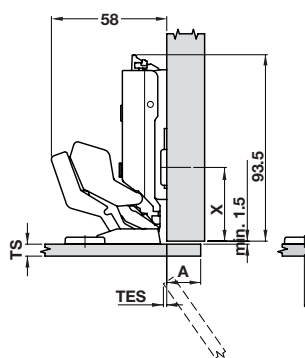
- > For door thicknesses of 6-10 mm
- > Opening angle 125°
- > No cup hole necessary
- > For door overlays up to 25 mm
- > 3-dimensional adjustment with appropriate mounting plate
- > Zero protrusion up to 14 mm overlay

Screwing position



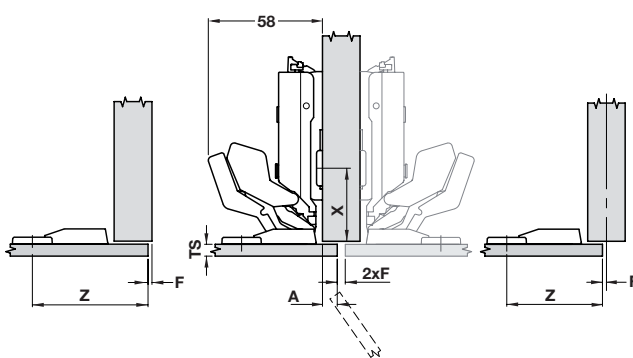
Mounting plate height 0			
Z	A+41		
A	Max. 25		
Screwing dimension (Z)			

Overlay



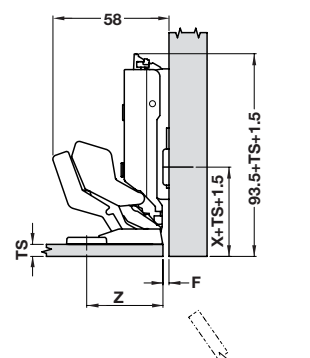
Mounting plate height 0

Half overlay



Mounting plate height 0

Inset



Mounting plate height 0

Minimum gap/minimum reveal

Values for 0 mm mounting plate height

Screwing dim. Z	38	39	47	49	51	53	55
Door protrusion TES	0	0	0	0	0	0	0
Door overlay A	-3	-2	6	8	10	12	14
Door thickness TS							
Min. reveal F / Gap S	F S	F S	F S	F S	F S	F S	F S
6-10 mm	2 1.5	2 1.5	2 1.5	2 1.5	2 1.5	2 1.5	2 1.5

Minimum gap/minimum reveal

Values for 0 mm mounting plate height

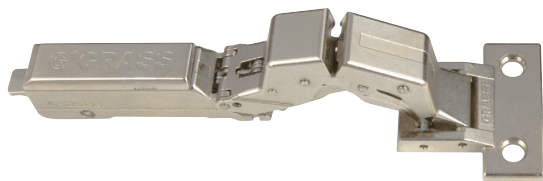
Screwing dim. Z	56	58	60	61	63	64	66
Door protrusion TES	0.5	1.5	3	3.4	0	0	0
Door overlay A	15	17	19	20	22*	23*	25*
Door thickness TS							
Min. reveal F / Gap S	F S	F S	F S	F S	F S	F S	F S
6-10 mm	2 1.5	2 1.5	2 1.5	2 1.5	2 2.5	2 3	2 4

* Door thickness A = 22-25 mm only with opening angle reduction clip



Trial fitting is recommended for all door thicknesses

Tiemos M0



- > Order fixing screws separately, shown below
- > Order qty: 1 pc



Version	Cat. No.
Integrated damper	348.27.801
Without integrated damper	348.27.601
Tipmatic	348.27.401

Countersunk screws for Tiemos M0



348.40.040 - M5 x 6 mm countersunk screw

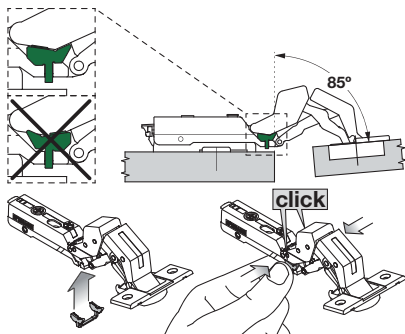


348.40.041 - M4 x 8 mm countersunk screw, sleeve and hex key set

- > For fixing Tiemos M0 hinges
- > M5 x 6 mm countersunk screw:
For minimum door thickness 6 mm
For aluminium, HPL, mineral composite
Order qty: Multiples of 50 pcs
- > M4 x 8 mm countersunk screw set:
Includes M4 x 5.5 mm sleeve and internal hex key
For minimum door thickness 8 mm
For chipboard, MDF, mineral composite, HPL
Order qty: Multiples of 100 sets

Item	Cat. No.
M5 x 6 mm screw	348.40.040
M4 x 8 mm screw set	348.40.041

Opening angle restraint



- > Prevents the door from butting against front panels or walls with corner mounting by reducing opening angle to 90°
- > For use with TIEMOS M9, M0 and Mirro 125° hinges
- > Black plastic
- > Order qty: 1 pc

Opening angle	Cat. No.
90°	348.40.012

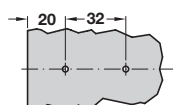
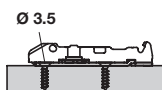
YOU ALSO NEED:

MOUNTING PLATES
Pages 364-366

FIXING SCREWS
Page 468

OPTIONAL ACCESSORIES
Pages 367-368, 403-417

Inline mounting plate



- > For TIEMOS click on fixing hinges only
- > Varianta screw fixing
- > Two part plate with ± 2 mm height adjustment via worm screw
- > Nickel-plated steel
- > Order fixing screws separately
- > Order qty: 1 pc

**BEST
SELLER**



Height	Varianta screw
0 mm	348.38.501



A wider range of mounting plates are shown on pages **364-366**