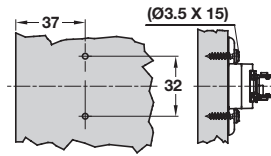
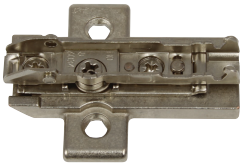


Cruciform mounting plates, 2 point fixing

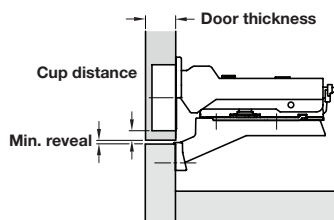
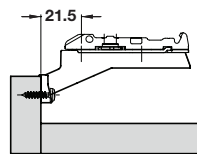
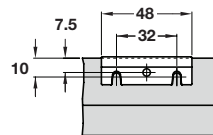
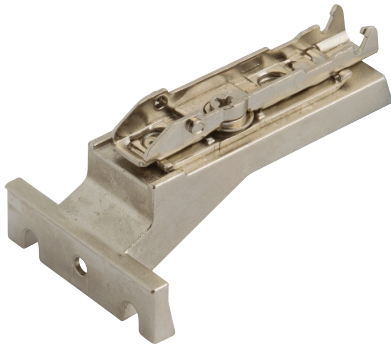


- > For TIOMOS click on fixing hinges only
- > Hospa screw fixing
- > Two part plate with ± 2 mm height adjustment via worm screw
- > Nickel-plated steel
- > Order fixing screws separately
- > Order qty: 1 pc



Height	Hospa screw
6 mm	348.39.511
8 mm	348.39.512
14 mm	348.39.536
19 mm	348.39.519
21 mm	348.39.520

Inset beaded mounting plate for frame constructions, 3 point fixing



- > For inset doors
- > To be used with TIOMOS half overlay hinges
- > Hospa screw fixing
- > With convenient height adjustment ± 2 mm via worm gear
- > Nickel-plated steel and zinc alloy
- > Order fixing screws separately
- > Order qty: 1 pc



Door thickness mm								
16	18	19	20	22	24	26	28	
3	3	3	3	3	3	3	3	4
4	4	4	4	4	4	4		3
5	5	5	5	5	5			2
6	6	6	6					1

Distance to cup mm

Minimum reveal mm



Height	Cat. No.
0 mm	348.38.020