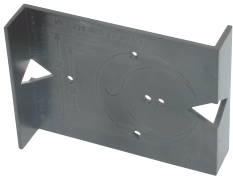


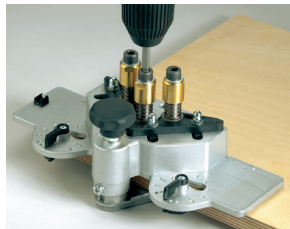
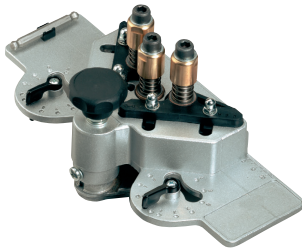
Jig for mounting plates and hinges



- > For use with all Click on hinges and mounting plates
- > For overlay installation only
- > Reversible
- > Black plastic
- > Order qty: 1 pc

	Cat. No.
Mounting plate jig	001.33.160

Drilling jig 500



- > For drilling holes for hinges with either screw fixing or pre mounted euro screws
- > With template for wing mounting plate
- > Bit for hand drill machine
- > 2x drill Ø 8 mm
- > 1x drill Ø 35 mm
- > Bit for boring machine
- > Order qty: 1 pc

	Cat. No.
Drilling pattern 48/9	001.33.400

Mounting plate jig



- > Available to order separately
- > Order qty: 1 pc

	Cat. No.
Mounting plate jig	001.33.420