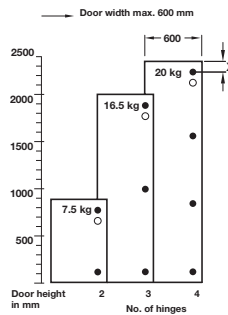


AXIMAT 300 HINGES

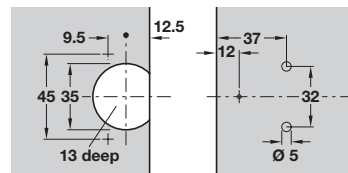


- > Solid design, eliminates the risk of fingers getting caught inside the hinge itself
- > Can be retro-fitted
- > Opening angle 270° or 240°
- > Screw fixing cup and arm
- > Quick mounting (no tools required) or screw mounting versions available
- > For door thickness 16-21 mm
- > Tested in accordance with ANSI Grade 1 and DIN ISO standards
- > Side or centre panel mounting version
- > With 2 way adjustment: Lateral -3 mm. Vertical ±2 mm
- > With catch
- > Ø 35 mm cup, 45/9.5 mm drilling pattern
- > Cup with rim cover and edge protection



How many hinges per door?

The graph shown gives guideline information only.
 The hinge requirement is determined by the weight and the shape of the door.
 The table to the right gives you a guideline for 19 mm chipboard with density of 750 kg/m³
 Doors must not be wider than they are high.
 Max. 600 mm door width, in case of door width under 400 mm wider gaps must apply.
 ○ = in case of heavy usage an additional hinge placed approx. 100 mm below the upper hinge is recommended.
 X = max. 100 mm

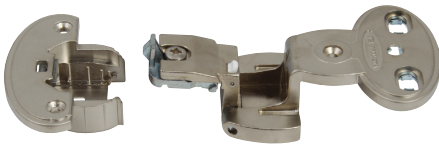


Solid design, eliminates the risk of fingers getting caught inside the hinge itself



- > Note: This hinge is ideal for retro-fitting and replacing hinges where there is a risk of finger entrapment
- > For new installations we would however recommend the hinge shown on page 436, with small gap

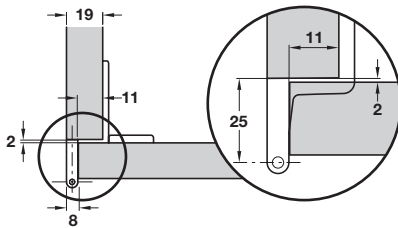
Single pivot hinge, 270°



Quick mounting



Screw mounting

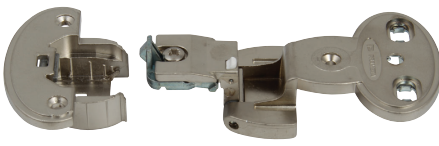


- > Single pivot hinges - order hinge arm and cup separately
- > Opening angle 270°
- > 11 mm door overlay
- > Matt nickel-plated zinc alloy
- > Order fixing screws separately
- > Order qty: 1 pc



Version	Quick mounting	Screw fixing
Hinge arm	344.00.910	344.00.900
Hinge cup	344.00.861	344.05.800

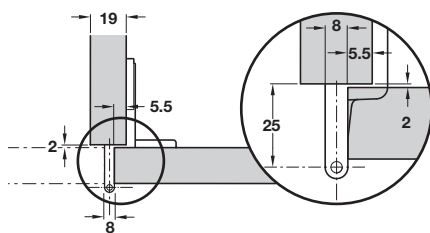
Single pivot hinge, 240°



Quick mounting



Screw mounting



- > Single pivot hinges - order hinge arm and cup separately
- > Opening angle 240°
- > Centre panel mounting
- > 5.5 mm overlay
- > Matt nickel-plated zinc alloy
- > Order fixing screws separately
- > Order qty: 1 pc



Version	Quick mounting	Screw fixing
Hinge arm	344.00.921	344.00.901
Hinge cup	344.00.861	344.05.800

Spacer, 1 mm thick



- > For carcasses under 19 mm
- > For use with Aximat hinges shown above and on page 436
- > 1 mm thick (can be stacked together)
- > Plastic
- > Order qty: 1 pc

Finish	Cat. No.
Transparent	344.00.993