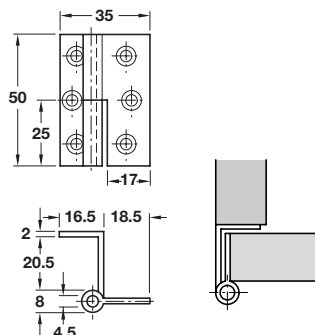


Cranked hinge



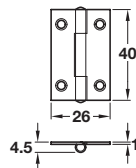
- > For butting, overlay doors
- > For door thickness 20-21 mm, side panel thickness as required
- > Drawn profiles brass
- > Order fixing screws separately
- > Order qty: Multiples of 10 pcs

PART NUMBERS REMOVED
307.01.832
307.01.823



Finish	Left	Right
Matt nickel-plated brass	307.01.636	307.01.627

Steel butt hinge

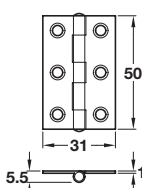
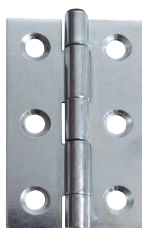


- > Galvanized steel
- > Order fixing screws separately
- > Order qty: 1 pc



Finish	Cat. No.
Galvanized	354.01.924

Steel butt hinge

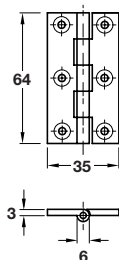
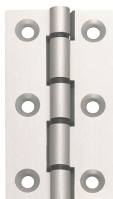


- > Galvanized steel
- > Order fixing screws separately
- > Order qty: 1 pc



Finish	Cat. No.
Galvanized	354.01.933

Aluminium butt hinge

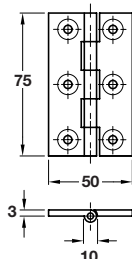
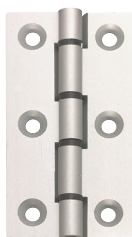


- > With aluminium pin and nylon washers
- > Not suitable for fire door applications due to low melting point
- > Ideal for use in hospitals, veterinary surgeries where hosing down is necessary and hygiene is of paramount importance
- > Etched and silver anodised aluminium
- > Order fixing screws separately
- > Order qty: 1 pc



Finish	Cat. No.
Etched and silver	354.30.901

Aluminium butt hinge



- > With aluminium pin and stainless steel washers
- > Not suitable for fire door applications due to low melting point
- > Ideal for use in hospitals, veterinary surgeries where hosing down is necessary and hygiene is of paramount importance
- > Etched and silver anodised aluminium
- > Order fixing screws separately
- > Order qty: 1 pc



Finish	Cat. No.
Etched and silver	354.30.902