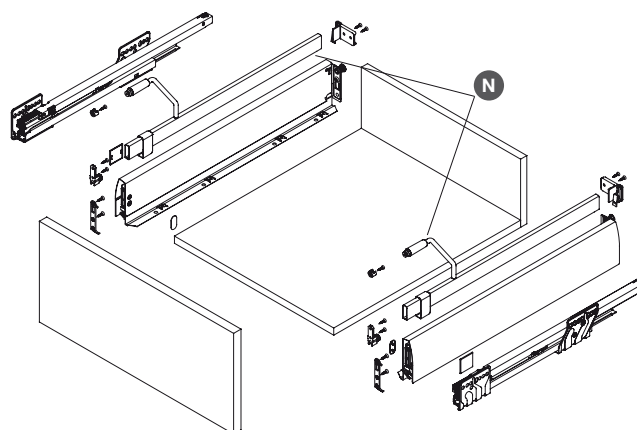
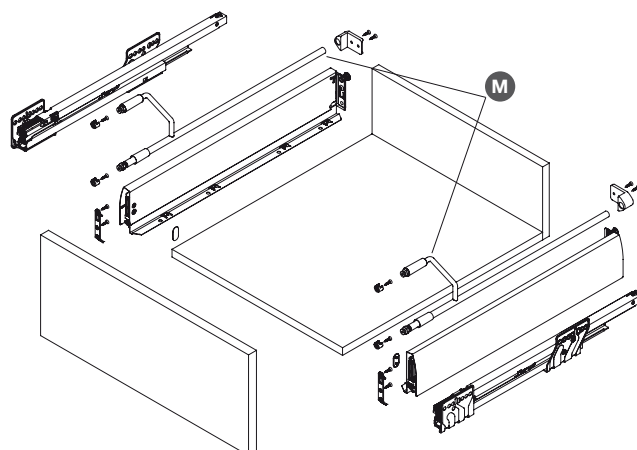
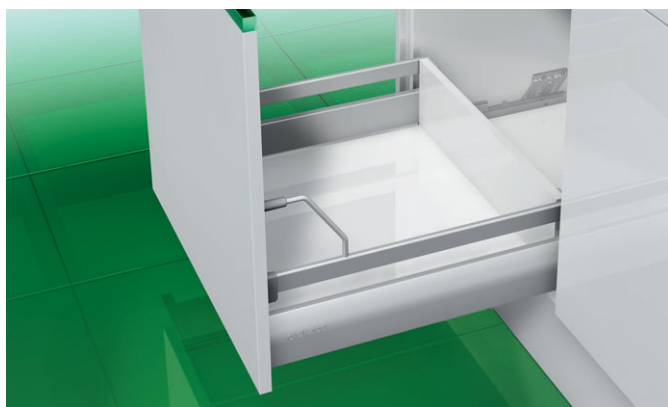
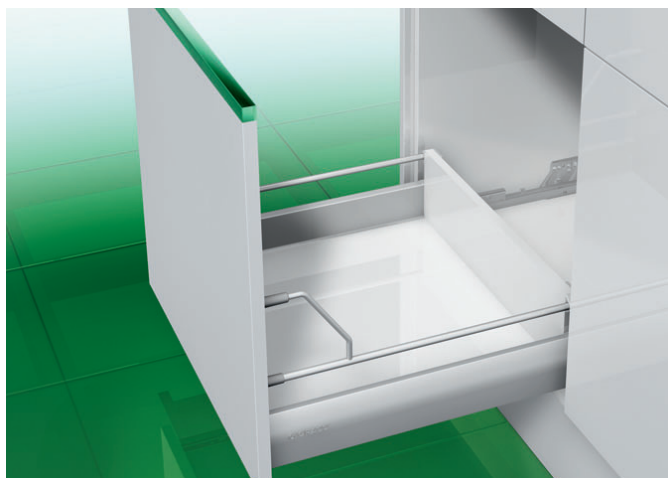


# GALLERY RAILING WITH FRONT SUPPORT

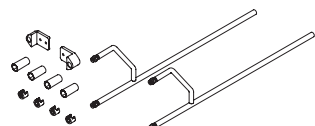
Round or rectangular gallery rails for use with Nova Pro standard drawers. For tall drawer fronts.

NEW

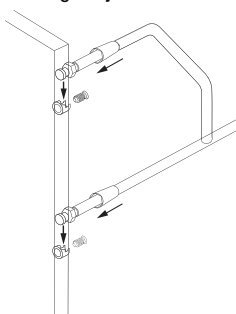


## Nova Pro Deluxe round railing with front support

M



For screw fixing with  
tilt angle adjustment



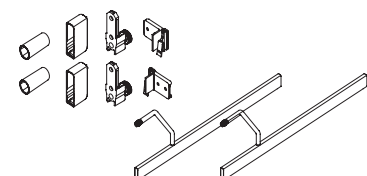
- > Includes:
- 2x Railings with front support
- 2x End clips
- 4x Covers for connectors
- 4x Front panel connectors
- > Order qty: 1 pc

NEW

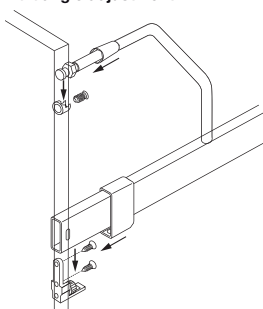
| Length | Metallic RAL 9006 | Pure white RAL 9010 |
|--------|-------------------|---------------------|
| 450 mm | 558.07.293        | 558.07.793          |
| 500 mm | 558.07.294        | 558.07.794          |

## Nova Pro Classic rectangular railing set with front support

N



For screw fixing with  
tilt angle adjustment



- > Includes:
- 2x Railings with front support
- 2x End clips
- 4x Covers for connectors
- 4x Front panel connectors
- > Order qty: 1 pair

NEW

| Length | Metallic RAL 9006 | Pure white RAL 9010 |
|--------|-------------------|---------------------|
| 450 mm | 558.07.145        | 558.07.783          |
| 500 mm | 558.07.150        | 558.07.784          |