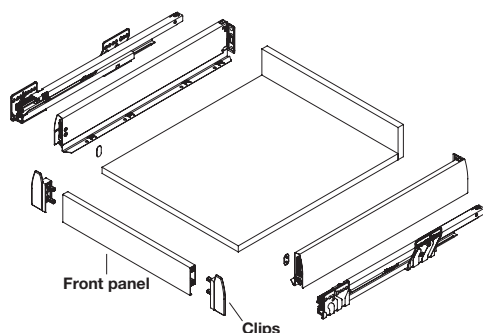
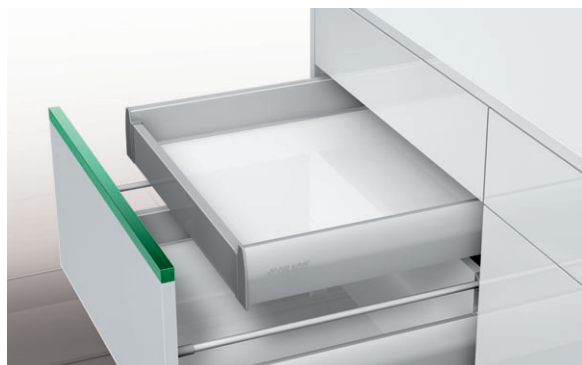


FRONT PANELS AND RAILINGS FOR INTERNAL DRAWERS

Front panel profiles, railings and clips to create Nova Pro Deluxe and Nova Pro Crystal internal drawers.

Front panel and clips for Nova Pro Deluxe standard internal drawer



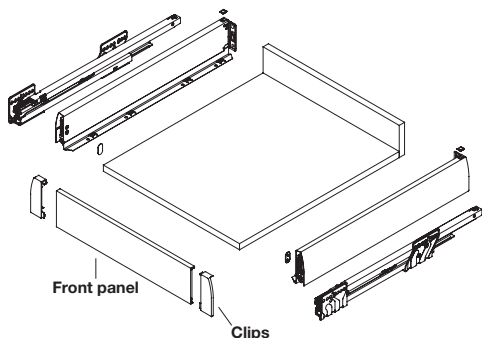
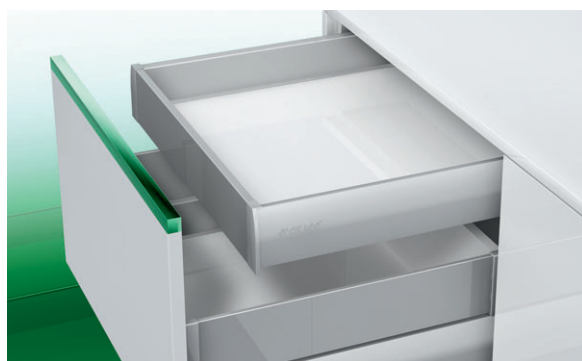
- > To suit 1200 mm wide drawer, can be cut to suit other drawer widths
- > Clips for front panel, left and right
- > Order qty: 1 pair
- > Front panel 1083 mm, cut to length (air Soft-close; inside cabinet width - 85 mm, liquid Soft-close®; inside cabinet width - 87 mm)
- > Order qty: 1 pc

To suit finish	Clips	Front panel
Metallic RAL 9006	-	558.04.022
White RAL 9010	558.04.771	558.04.822
Light grey RAL 7045	558.04.581	-



Information on cutting front panels to size is shown on page 60

Front panel for Nova Pro Crystal standard internal drawer



- > Clips for front panel, left and right
- > Plastic
- > Order qty: 1 set
- > Front panel 1150 mm, for cutting to length (see page 60 for cutting details)
- > Order qty: 1 pc

To suit finish	Clips	Front panel
Metallic RAL 9006	553.08.549	553.08.245
White RAL 9010	553.08.749	553.08.745



For Crystal deluxe internal drawers see page 74-77