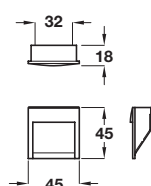


CAVENDISH inset handle



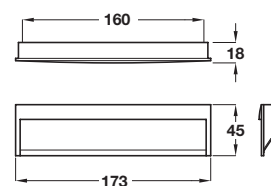
- > Zinc alloy
- > Order qty: 1 pc

Finish
Brushed nickel



Cat. No.
151.11.610

CAVENDISH inset handle



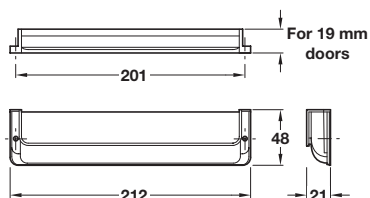
- > Zinc alloy
- > Order qty: 1 pc

Finish
Brushed nickel



Cat. No.
151.11.613

Inset handle and backplate set



- > Suitable for 19 mm thick doors
- > 2 part design
- > Zinc alloy
- > Order qty: 1 pc

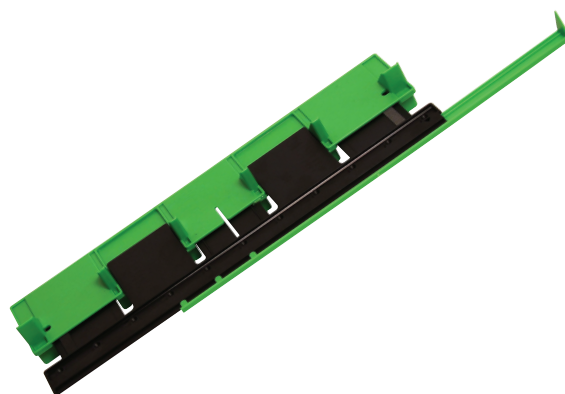
Finish
Brushed nickel



Cat. No.
151.58.610

HANDY TIP

“ Measure twice and drill once. Or, make life easier with a handle jig. ”



See page 274