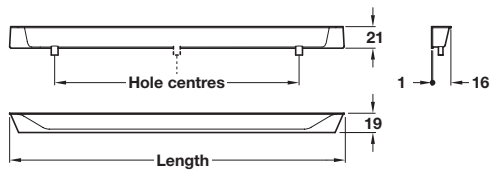
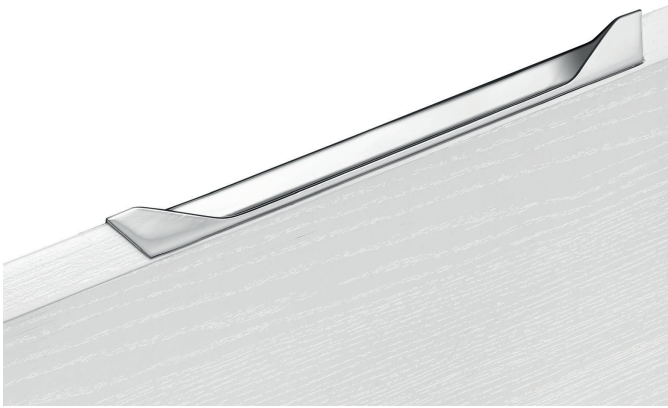


**SINTESI Inset handle**

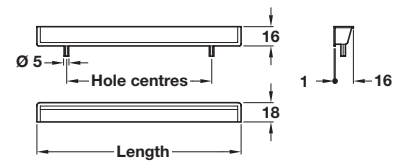


- > Order M4 handle screws separately
- > Zinc alloy, polished chrome finish
- > Order qty: 1 pc



Length	Hole centres	Cat. No.
200 mm	128 mm	111.44.282

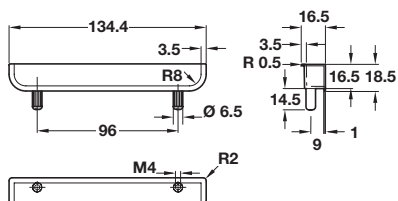
**Inset handle**



- > Ø 5 mm lugs
- > Zinc alloy, satin nickel finish
- > Order qty: 1 pc

Length	Hole centres	Cat. No.
180 mm	128 mm	151.47.662

**KATO inset handle**

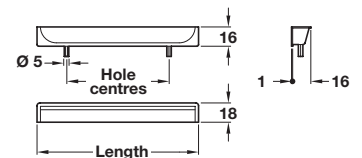
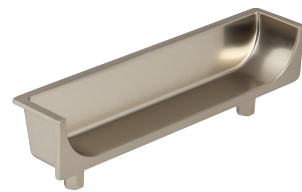


- > Press fit with Ø 6.5 mm lugs, 96 mm hole centres
- > Zinc alloy, polished stainless steel effect with brushed edges
- > Order qty: 1 pc



Length	Cat. No.
134.4 mm	126.54.090

**HIDE Inset handle**



- > Ø 5 mm lugs
- > Zinc alloy, satin nickel finish
- > Order qty: 1 pc

Length	Hole centres	Cat. No.
90 mm	64 mm	151.47.663