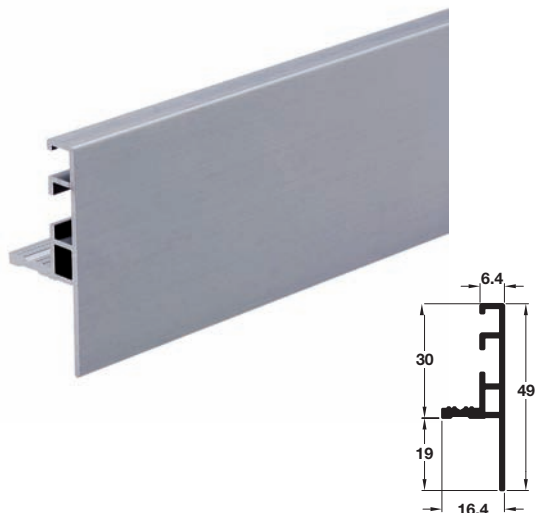
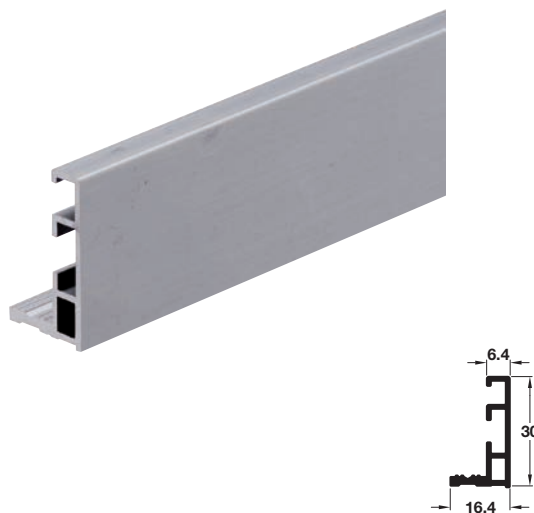


FLAT GOLA 49 mm horizontal door profile**A****NEW**

- > For fixing under worktops
- > Installation: Screw fix to cabinet with Ø 4.5 mm countersunk screws (not included) or order fixing plate 126.36.061 separately
- > Order spacers 126.36.065 separately to support worktop
- > Anodised aluminium, stainless steel finish
- > Order qty: 1 pc (1 pc = 4.2 m length)

Length
4.2 m

Cat. No.
126.36.070

FLAT GOLA 30 mm horizontal dishwasher profile**B****NEW**

- > For fixing above dishwasher door
- > Installation: Order connecting plate set 126.36.062 separately to join profile to top horizontal profile
- > Anodised aluminium, stainless steel finish
- > Order qty: 1 pc (1 pc = 600 mm length)

Length
600 mm

Cat. No.
126.36.090

