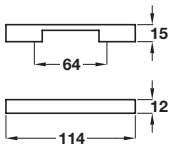
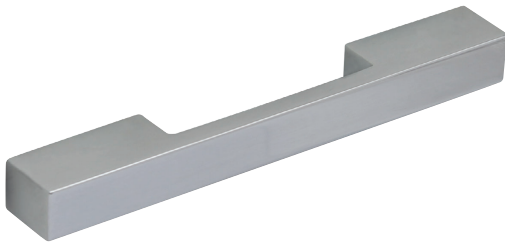


D handle

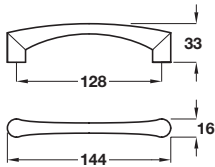


- > Zinc alloy
- > Order qty: 1 pc



Finish	Cat. No.
Polished chrome	108.66.220

D handle

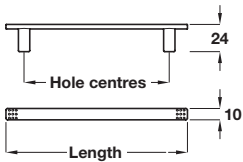


- > Order M4 handle screws separately
- > Zinc alloy
- > Order qty: 1 pc



Finish	Cat. No.
Stainless steel colour	101.71.022

MELINA pull handle



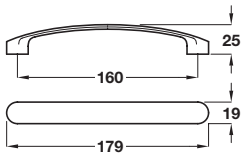
> Not for use on load bearing doors such as appliances

- > Order M4 handle screws separately
- > Zinc alloy, polished chrome finish
- > Order qty: 1 pc



Length	Hole centres	Cat. No.
161.5 mm	128 mm	111.38.222
193.5 mm	160 mm	111.38.223
257.5 mm	224 mm	111.38.225

HARRINGTON D handle



- > Order M4 handle screws separately
- > Zinc alloy
- > Order qty: 1 pc



Finish	Cat. No.
Polished chrome	111.85.223
Stainless steel colour	111.85.023

DECORATIVE HANDLES 2015, © Häfele U.K. Ltd 2015. Dimensional data not binding. We reserve the right to alter specifications without notice.