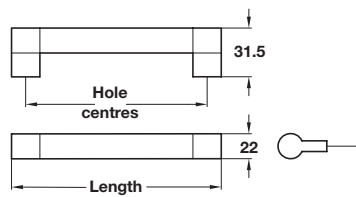


## Keyhole bar handle

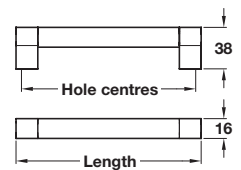
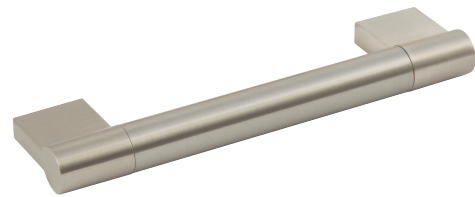


- > Order M4 handle screws separately
- > Zinc alloy ends in a stainless steel finish, with stainless steel tube
- > Order qty: 1 pc



Length	Hole centres	Cat. No.
205 mm	192 mm	115.69.027

## SLOANE keyhole bar handle

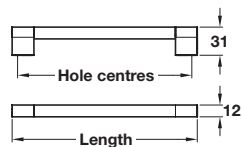


- > Order M4 handle screws separately
- > Zinc alloy ends in stainless steel tube, in a brushed nickel finish
- > Order qty: 1 pc



Length	Hole centres	Cat. No.
153 mm	128 mm	108.65.645
185 mm	160 mm	108.65.646

## Keyhole bar handle, Ø 12 mm

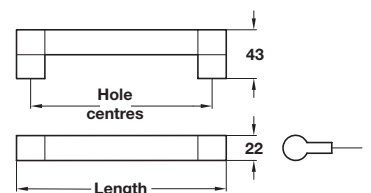


- > Order M4 handle screws separately
- > Brushed stainless steel bar with polished chrome zinc alloy ends
- > Order qty: 1 pc



Length	Hole centres	Cat. No.
173 mm	160 mm	115.69.056
204 mm	192 mm	101.24.007

## CHELSEA keyhole bar handle, Ø 22 mm



- > Zinc alloy ends with stainless steel tube, in a stainless steel effect finish
- > Order M4 handle screws separately
- > Order qty: 1 pc



Length	Hole centres	Cat. No.
153 mm	128 mm	115.69.012
185 mm	160 mm	115.69.013
281 mm	256 mm	115.69.016
381 mm	356 mm	115.69.017
537 mm	512 mm	115.69.018
657 mm	632 mm	115.69.019