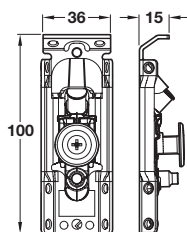


Libra H1 concealed cabinet hanger, screw mounting

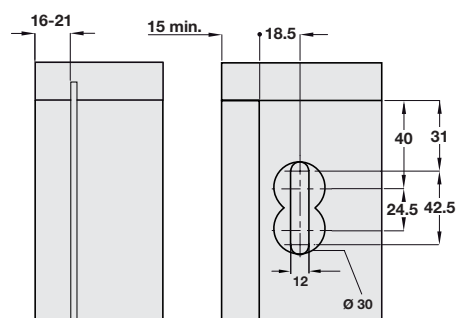


Cabinet hangers should only be adjusted with a hand tool and not a power tool



- > Unhanded
- > Load carrying capacity: 150 kg* per pair (Load carrying capacity applies to 2 cabinet hangers bearing an evenly distributed load in accordance with regulation DIN 68840)
- > Two-way independent adjustment:
Vertical adjustment: 13 mm
Horizontal adjustment: 12 mm
- > Zinc-plated steel
- > Order qty: 1 pc

Cat. No.
Libra H1 cabinet hanger
290.41.900



Drilling plan for both rectangular and round cover caps shown on page 192

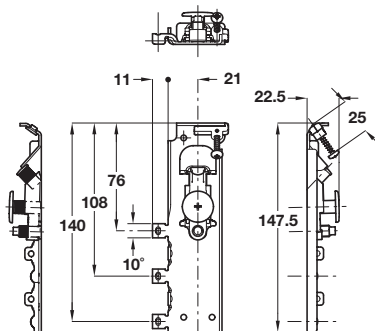


Wall plates and cover caps must be ordered separately, shown on page 192

Libra H3 cabinet hanger, dowels/screw mounting



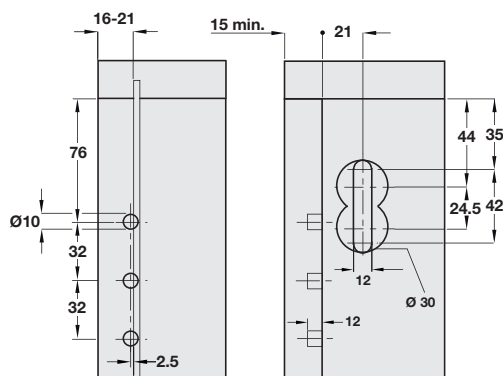
Cabinet hangers should only be adjusted with a hand tool and not a power tool



Right handed version shown

- > Handed
- > Slots into side cabinet by making four face borings and secured in position by rotating the locking pin with ridges 180°
- > Load carrying capacity: 150 kg per pair (Load carrying capacity applies to 2 cabinet hangers bearing an evenly distributed load in accordance with regulation DIN 68840)
- > Two-way independent adjustment:
Vertical adjustment: 13 mm
Horizontal adjustment: 12 mm
- > Zinc-plated steel
- > Order qty: 1 pc (order 1 left and 1 right handed pc)

Finish	Left	Right
Libra H3 cabinet hanger	290.41.915	290.41.905



Drilling plan for both rectangular and round cover caps shown on page 192



Wall plates and cover caps must be ordered separately, shown on page 192