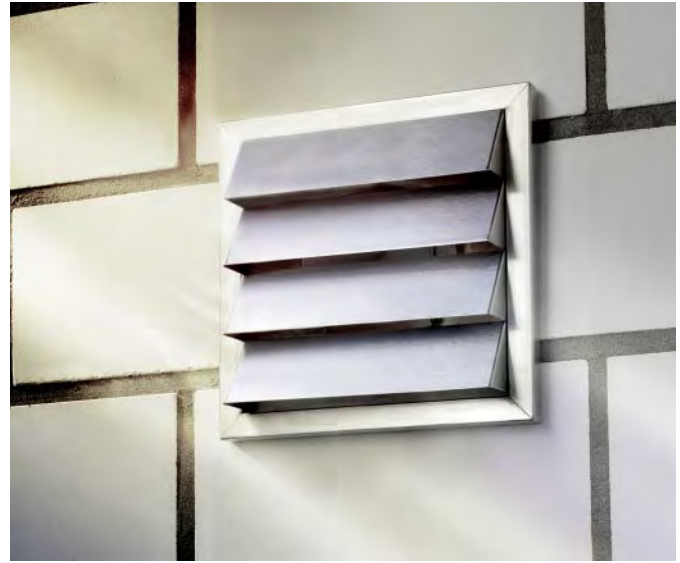


COMPAIRFLOW® WALL VENTS

Stainless steel wall vents to suit the Compair® Flow ducting system shown on pages **252-253**

- > Weather-resistant properties
- > Warp resistant blinds and hoods with long service life
- > Suitable for air duct installations of COMPAIR® flow and round duct systems up to Ø 200 mm
- > Integrated back pressure shutter prevents ingress of wind and rain into the duct

For further information please contact us.



Wall vent



System 125



System 150

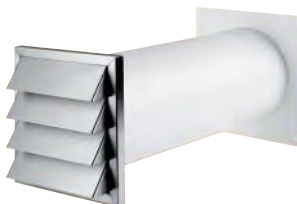
- > Vent height x width external dimensions; see table below
- > Connector depth: 145 mm
- > Stainless steel
- > Order qty: 1 pc

System	Tube Ø	Vent height x width	Cat. No.
-	Ø 100 mm	190 x 190 mm	500.97.080
125	Ø 125 mm	190 x 190 mm	500.97.180
150	Ø 150 mm	190 x 190 mm	500.97.581
-	Ø 180 mm	240 x 240 mm	500.97.781
-	Ø 200 mm	240 x 240 mm	500.97.981

Wall vent system



System 125



System 150

- > Comprises of:
Wall vent height x width: 190 x 190 mm external dimensions
Duct tube, adjustable length; see table below
Plate
- > System Plate height x width: Connector depth:
System 125: 155 x 155 mm 25 mm
System 150: 190 x 180 mm 25 mm
- > Stainless steel
- > Order qty: 1 pc

System	Tube Ø	Installed depth	Cat. No.
125	Ø 125 mm	420-620 mm	500.97.160
150	Ø 150 mm	420-620 mm	500.97.161

KITCHEN ACCESSORIES 2015, © Hafele U.K. Ltd 2015. Dimensional data not binding. We reserve the right to alter specifications without notice.