

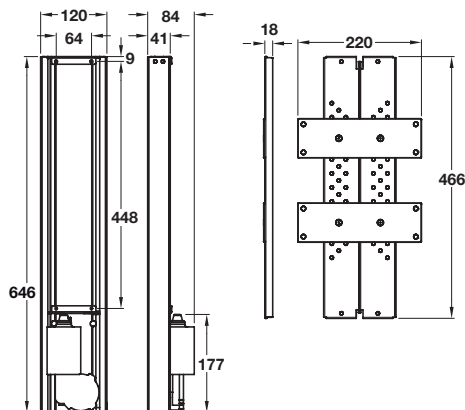
## LED TV LIFTS

TV lifts with TV mounting brackets included, can also be used for upside down applications for drop down TVs or cabinets.

- > Radio wave remote control, not infrared, so will work through closed cabinet - no need for glass
- > TV lifts can also be used without being mounted in a cabinet, i.e. it can be wall mounted, e.g. for use in a training room or anywhere that screen height needs to be adjusted, such as for touch screens
- > **Note:** Due to the extensive variation of TV's on the market it is up to the customer to decide if the TV will fit the lift and cabinet they are making



### LED TV / monitor lift, with 460 mm travel



- > 2 section telescopic lift
- > Two versions: With or without automatic reverse function for improved safety
- > 5-50 kg lifting capacity
- > Input power: 110-240 VAC/ 50-60 Hz
- > UK AC plug
- > Remote controlled with RF and manual switch
- > TV / monitor mounting brackets set included
- > Vesa fixing: 50 x 50, 75 x 75, 100 x 100, 200 x 100, 200 x 200
- > Upside down use possible
- > Silver powder coated steel
- > Order qty: 1 pc



Travel: 460 mm	Cat. No.
Without automatic reverse function	421.68.470
With automatic reverse function	421.68.471