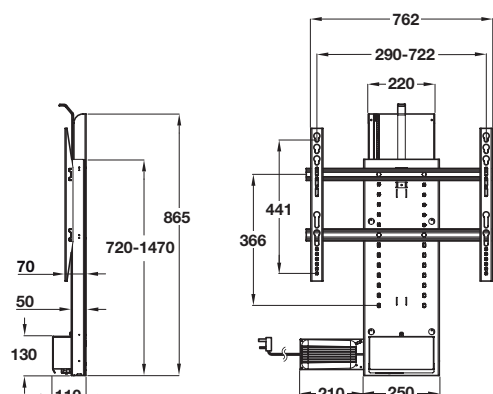


LED TV lift, with 750 mm travel



- > 2 section telescopic lift
- > Min-max. lift capacity in standard installation: 5-65 kg
- > Min-max. capacity for lift mounted in the upside down position: 5-29 kg
- > Input power: 110-240 VAC/ 50-60 Hz
- > UK AC plug
- > Remote controlled with RF and manual switch
- > Lid lifter and TV mounting brackets included
- > VESA fixings: 600 x 400, 600 x 200, 600 x 100, 400 x 400, 400 x 200, 400 x 100, 300 x 300, 200 x 200, 200 x 100
- > Upside down use possible
- > Black painted steel
- > Order qty: 1 pc



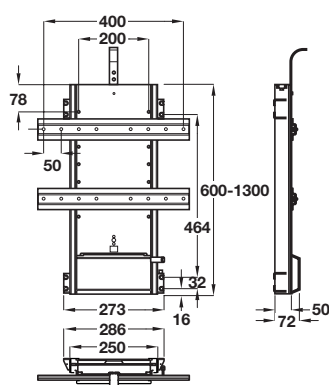
Travel: 750 mm

Cat. No.

Without automatic reverse function

421.68.380

LED TV lift, with 700 mm travel



- > 3 section telescopic lift for compact installation height
- > Min-max. lift capacity in standard installation: 5-65 kg
- > Min-max. capacity for lift mounted in the upside down position: 5-29 kg
- > Input power: 110-240 VAC/ 50-60 Hz
- > UK AC plug
- > Remote controlled with RF and manual switch
- > Adjustable stroke
- > Automatic reverse function for improved safety
- > Lid lifter and TV mounting brackets included
- > Vesa fixing: 400 x 300, 400 x 200, 400 x 100, 300 x 300, 200 x 200, 200 x 100, 100 x 100
- > Upside down use possible
- > Black painted steel
- > Order qty: 1 pc



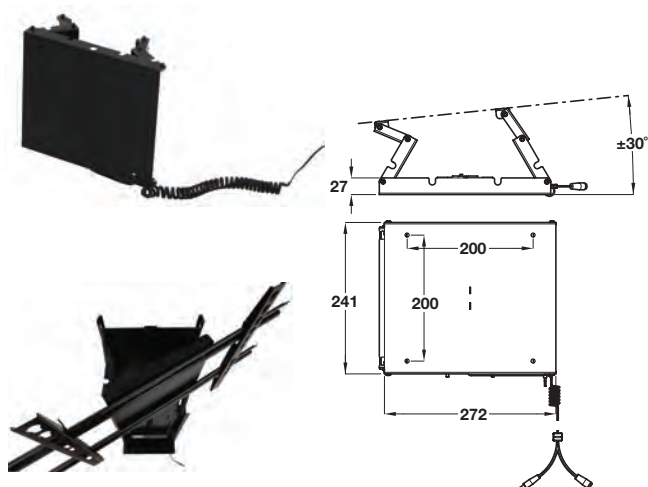
Travel: 700 mm

Cat. No.

With automatic reverse function

421.68.422

Swivel bracket, for use with 700 or 750 mm travel TV lifts



Optional swivel bracket, for use with TV lifts shown above

- > For use with 700 and 750 mm TV lifts shown above, to allow TV to swivel once in fully extended position
- > Can also be used with 1000 mm TV lift Cat. No. 421.68.423, for further informaton visit www.hafele.co.uk
- > Up to 30° swivel, operated manually by hand to adjust TV angle
- > Microswitch to prevent operation of TV lift unless unit is in its full back flat position
- > Black painted steel
- > Order qty: 1 pc



Swivel bracket

Cat. No.

421.68.493