

HOUSING PROFILES FOR FLEXYLED STRIP LIGHTS

Toucan, String or Skyline profiles can be ordered separately for use with the FLEXYLED 12V strip light to create applications such as illuminated shelves, recessed lighting or under edge cabinet lighting.



TOUCAN housing profile, for glass shelves
 > shown below

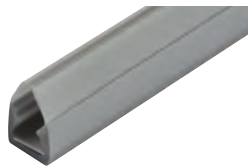


STRING housing profile, for recessed mounting
 > page 75

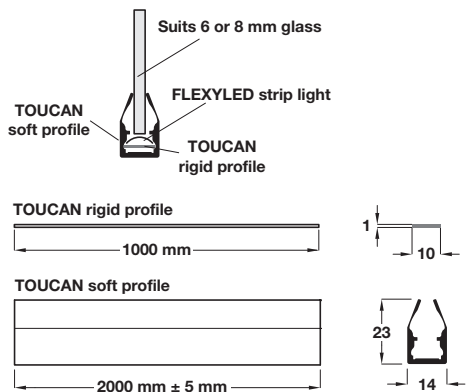


SKYLINE housing profile, for edge mounting
 > page 75

TOUCAN housing profiles, for glass shelves, for use with FLEXYLED strip lights



- > Order rigid profile, soft profile and FLEXYLED strip light separately to create illuminated glass shelves:
 - Rigid profile supports FLEXYLED strip light
 - Soft profile section suits 6 or 8 mm glass shelves
- > Different light effects can be achieved by choice of glass:
 - Frosted glass = Diffused light across entire shelf
 - Clear glass = Lights the front edge
- > Grey plastic soft profile, metal rigid profile
- > Order qty: 1 pc



! Not load bearing: Shelf supports must be ordered separately, visit www.hafele.co.uk

➔ FLEXYLED strip lights must be ordered separately, shown on pages **72-73**

Order rigid profile and soft profile separately		
Item	Length	Cat. No.
Rigid profile	1000 mm	833.02.790
Soft profile	2000 mm ± 5 mm	833.02.791

LIGHTING AND ELECTRICAL 2015, © Häfele U.K. Ltd 2015. Dimensional data not binding. We reserve the right to alter specifications without notice.