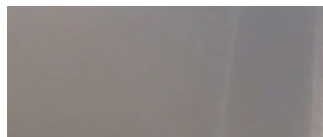
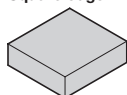


Stainless steel worktops, splashbacks and upstands



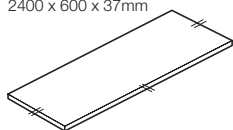
Brushed stainless steel

Square edge



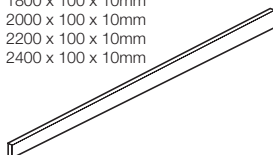
Worktops

1000 x 600 x 37mm
1200 x 600 x 37mm
1400 x 600 x 37mm
1600 x 600 x 37mm
1800 x 600 x 37mm
2000 x 600 x 37mm
2200 x 600 x 37mm
2400 x 600 x 37mm



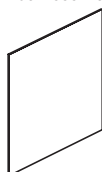
Upstands

0.9mm thick stainless steel wrapped
onto 9.0mm thick MRMDf
1000 x 100 x 10mm
1200 x 100 x 10mm
1400 x 100 x 10mm
1600 x 100 x 10mm
1800 x 100 x 10mm
2000 x 100 x 10mm
2200 x 100 x 10mm
2400 x 100 x 10mm



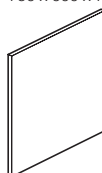
Thin splashbacks

0.9mm thick stainless steel
750 x 600 x 0.9mm
750 x 900 x 0.9mm



Splashbacks

0.9mm thick stainless steel wrapped
onto 9.0mm thick MRMDf
750 x 600 x 7mm
750 x 900 x 7mm



Worktops

- > 1.2 mm thick Grade 304 stainless steel wrapped onto an 18.0 mm thick solid board then an 18.0 mm lattice of MRMDf core (Moisture Resistant MDF), brushed effect runs horizontally. Front and both end edges are folded down and back underneath for safety, with the two corners welded and dressed

Upstands

- > 0.9 mm thick Grade 304 stainless steel wrapped onto 9.0 mm thick MRMDf core (Moisture Resistant MDF), brushed stainless steel finish, brushed effect runs horizontally. All four edges are folded and unwelded

Splashbacks

- > Thin splashbacks - 0.9 mm thick Grade 304 stainless steel, brushed stainless steel finish, brushed effect runs vertically
- > Splashbacks - 0.9 mm thick Grade 304 stainless steel wrapped onto 9.0 mm thick MRMDf core (Moisture Resistant MDF), brushed stainless steel finish, brushed effect runs vertically. All edges are folded and unwelded

Storage

- > We recommend that the plastic coating protecting the stainless steel must be left intact until installation is completed

Fitting

- > Stainless steel worktops should only be fitted in areas that experience normal cooking ranges of temperature and humidity. Particular care should be taken in newly built areas to ensure a stable atmosphere. All windows/doors should be in place, plasterwork fully dried and major works completed prior to installation
- > Use adhesive to mount upstands and splashbacks to wall - order separately: Assembly adhesive, 310 ml tube, Cat. No. 003.50.100

Cleaning and care

- > Chlorides such as bleach or common salt and acids of any kind can damage all grades of stainless steel surfaces. If a spillage occurs rinse immediately and thoroughly with plenty of fresh water and then dry with a soft cloth
- > Metal objects that may rust should never be left in contact with stainless steel
- > To maintain the best appearance of your stainless steel worktops, only use warm water and a mild detergent ensuring that the surface is rinsed thoroughly and then dried with a soft cloth



10 Year
Warranty

Item	Stainless steel	
Worktop 1000 x 600 x 37 mm	564.12.001	NEW
Worktop 1200 x 600 x 37 mm	564.12.002	
Worktop 1400 x 600 x 37 mm	564.12.003	NEW
Worktop 1600 x 600 x 37 mm	564.12.004	
Worktop 1800 x 600 x 37 mm	564.12.005	NEW
Worktop 2000 x 600 x 37 mm	564.12.006	
Worktop 2200 x 600 x 37 mm	564.12.007	NEW
Worktop 2400 x 600 x 37 mm	564.12.008	
Upstand 1000 x 100(H) x 10 mm	564.12.501	
Upstand 1200 x 100(H) x 10 mm	564.12.502	
Upstand 1400 x 100(H) x 10 mm	564.12.503	
Upstand 1600 x 100(H) x 10 mm	564.12.504	
Upstand 1800 x 100(H) x 10 mm	564.12.505	
Upstand 2000 x 100(H) x 10 mm	564.12.506	
Upstand 2200 x 100(H) x 10 mm	564.12.507	
Upstand 2400 x 100(H) x 10 mm	564.12.508	
Thin splashback 600 x 750(H) x 0.9 mm	564.86.000	
Thin splashback 900 x 750(H) x 0.9 mm	564.86.001	
Splashback 600 x 750(H) x 10 mm	564.86.100	NEW
Splashback 900 x 750(H) x 10 mm	564.86.101	



Care should be taken when handling and installing these products. For your safety, we recommend that hands are protected from unfinished edges and corners