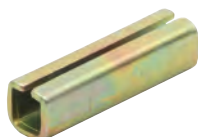


Spindle converter



- > To convert spindle to different size
- > Bright steel
- > Order qty: 1 pc

| To convert spindle | Cat. No. |
|----------------------|------------|
| 5 mm spindle to 8 mm | 909.40.600 |

Startec piercing grub screw



- > For use with Startec lever/knob handle
- > Ø 6 mm
- > Stainless steel
- > Order qty: 1 pc

| Startec grub screw | Cat. No. |
|--------------------|------------|
| | 909.46.090 |

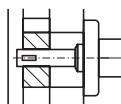
Standard piercing grub screw



- > For use with lever/knob handle
- > Ø 6 mm
- > Steel
- > Order qty: 1 pc

| Standard grub screw | Cat. No. |
|---------------------|------------|
| | 909.00.958 |

Half spindle

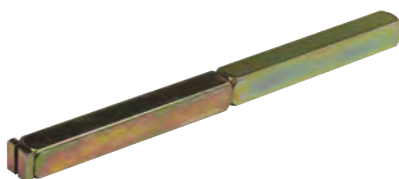


- > For one-sided installation on doors
- > 8 mm square
- > Zinc-plated high grade alloy steel
- > Order qty: 1 pc



| Length | To suit doors | Cat. No. |
|--------|----------------|------------|
| 60 mm | 40-50 mm thick | 909.46.106 |
| 71 mm | 50-65 mm thick | 909.46.107 |

Split spindle



- > For use with split follower locks
- > 8 mm square
- > Zinc-plated high grade alloy steel
- > Order qty: 1 pc



| Length | To suit doors | Cat. No. |
|--------|------------------|------------|
| 120 mm | Max. 54 mm thick | 909.83.711 |