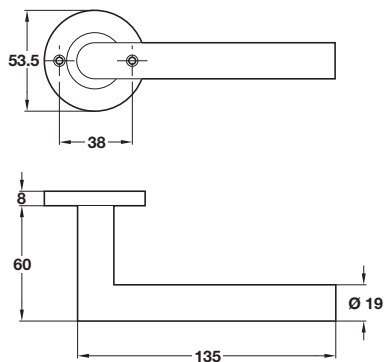
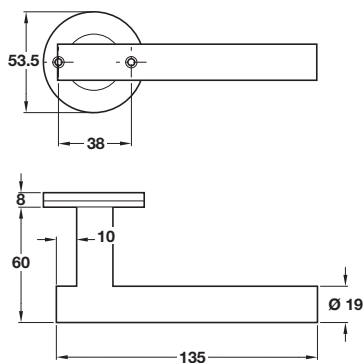


**HL01 Lever handle set, grade 304 stainless steel****Standard keyway escutcheon****Euro profile cylinder escutcheon****WC release and inside turn**

- > Pair of lever handles and roses with escutcheon or WC set included
- > 8 mm spindle included
- > Sprung, for use with standard duty followers
- > To suit doors 38-55 mm thick
- > WC release and inside turn with 8 mm spindle, suits doors 38-45 mm thick
- > Grade 304 stainless steel
- > Order qty: 1 set

**BS EN 1906****2 6 - B 0 3 0 B**

Lever handles	Satin	Polished
with standard keyway escutcheon		
Cat. No.	903.91.358	903.91.359
with Euro profile cylinder escutcheon		
Cat. No.	903.92.358	903.92.359
with WC release and inside turn		
Cat. No.	903.93.358	903.93.359

**HL02 Lever handle set, grade 304 stainless steel****Standard keyway escutcheon****Euro profile cylinder escutcheon****WC release and inside turn**

- > Pair of lever handles and roses with escutcheon or WC set included
- > 8 mm spindle included
- > Sprung, for use with standard duty followers
- > To suit doors 38-55 mm thick
- > WC release and inside turn with 8 mm spindle, suits doors 38-45 mm thick
- > Grade 304 stainless steel
- > Order qty: 1 set

**BS EN 1906****2 6 - B 0 3 0 B**

Lever handles	Satin	Polished
with standard keyway escutcheon		
Cat. No.	903.91.116	903.91.117
with Euro profile cylinder escutcheon		
Cat. No.	903.92.116	903.92.117
with WC/emergency release and inside turn		
Cat. No.	903.93.116	903.93.117