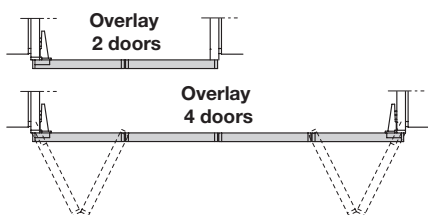
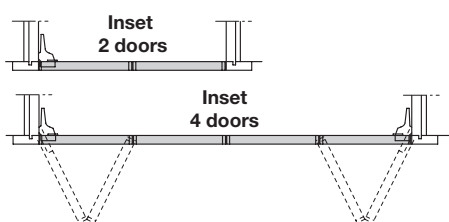


HAWA-MULTIFOLD 30/W FOLDING DOOR SYSTEM

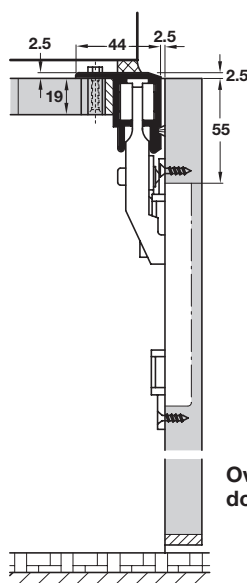
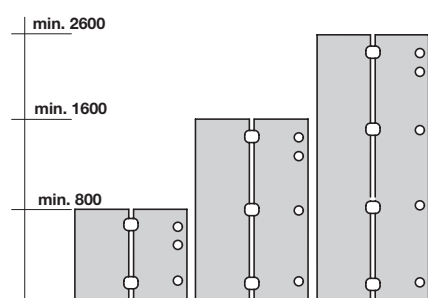
High quality top hung residential and commercial applications where clear threshold without floor channel is essential
e.g. walk-in wardrobes, suitable for pairs of doors only.

- > HAWA-Multifold 30/W
- > Range: Max. panel weight **30 kg**
Max. panel height **2600 mm**
Panel width sizes **200-500 mm**
Panel thickness **19-25 mm**
- > Components accommodate either overlay (Vorfront) or inset (Infront) pairs of doors

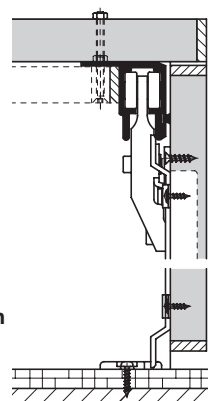
Configuration examples



Position of hinges



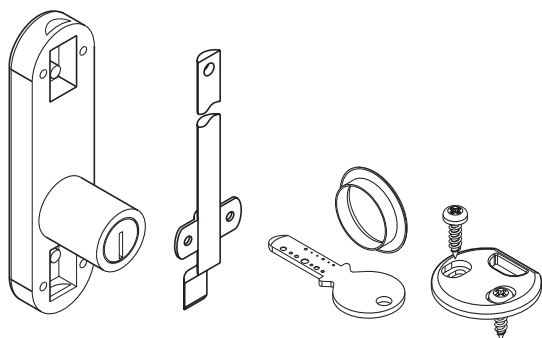
Overlay door option



Inset door option

also showing espagnolette lock with cranked profile rod

Espagnolette lock set

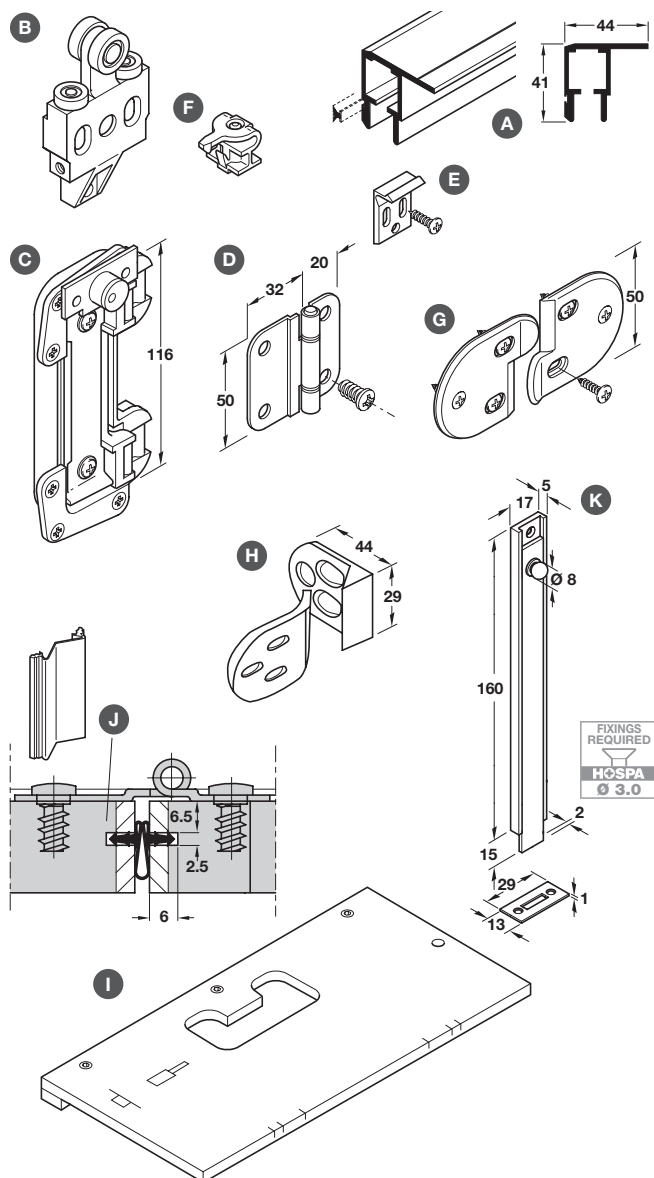


- > Kaba 8 cylinder, rim-type, double locking, unhandled
- > Set comprises:
 - Polished nickel-plated steel cylinder, matt nickel plated steel lock case
 - Polished nickel-plated steel profile rod, 10 x 3 mm
 - Polished nickel-plated steel rod guides, 2 x 1.5 mm
 - Black plastic rod striking-plate, screw fixing
 - Accessories: 2 keys and cylinder rosette included
- > Order qty: 1 set

Direction of key turn:
Right

Cat. No.
231.47.990

Multifold 30/W fitting set



> Fitting set consists of:

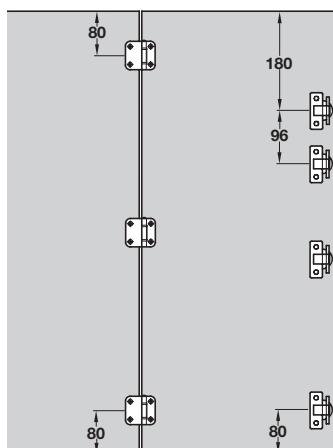
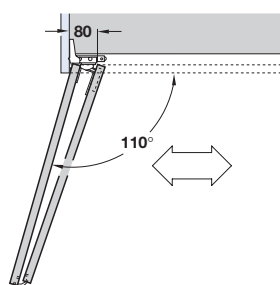
- A Top track, 1.1 m length, with screw holes and brush seal, anodised aluminium
- B Trolley hanger, with stabilising rollers, steel
- C Suspension unit, black/nickel-plated
- D Centre hinge, for panel to panel joint, matt nickel-plated steel
- E Door catch, black plastic
- F Track stopper/retainer, black plastic
- G Interlocking fitting, to stabilise centre joint of 4 door applications, black plastic
- H Surface equaliser, for side wall, black plastic
- > Additional items, order separately
- I Drilling template, for guides and suspension unit
- J Sealing profile strip, 5.0 m length, for panel to panel gap, press-fits into 2.5 mm groove, white or black rubber
- K Knob slide surface bolt, surface or semi recessed fixing to bottom of door, polished brass or satin nickel-plated brass

Item	For 2 panels		
A Top track	1 length		
B Trolley hanger	1 pc		
C Suspension unit	1 pc		
D Centre hinge	4 pcs		
E Door catch	1 pc		
F Track stopper	1 pc		
G Interlocking fitting	1 pair		
H Surface equaliser	1 pc		
Cat. No.	409.52.050		
Additional fittings		Order qty	Cat. No.
D Centre hinge	1 pc	409.32.690	
G Interlocking fitting	1 pair	409.50.940	
I Drilling template	1 pc	409.50.990	
Item	Order qty	White rubber	Black rubber
J Sealing profile strip	1 length	409.54.700	409.54.300
Item	Order qty	Polished	Satin nickel-plated
K Knob slide bolt	1 pc	900.17.945	900.17.946

Frame to panel concealed hinges and mounting plates



Inset door option



> For inset doors:

- > Hinge, 110° opening angle. Sprung. Slide on arm. Ø 35 mm cup, screw fixing. Nickel-plated pressed steel
- > Mounting plate, 8 mm height. For slide on arms. Screw fixing. Nickel-plated zinc alloy and pressed steel

> For overlay doors:

- > Hinge, 110° opening angle. Sprung. Slide on arm. Ø 35 mm cup, screw fixing. Nickel-plated pressed steel
- > Mounting plate, 0 mm height. For slide on arms. Screw fixing. Nickel-plated zinc alloy and pressed steel
- > Refer to www.hafele.co.uk for further information on hinges and mounting plates
- > Order qty: 1 pc

For inset doors	Cat. No.
Hinge	323.17.516
Mounting plate	323.85.783
For overlay doors	Cat. No.
Hinge	323.17.507
Mounting plate	323.80.706