

# FINETTA SPINFRONT 30/50 FOR SINGLE PIVOT DOOR

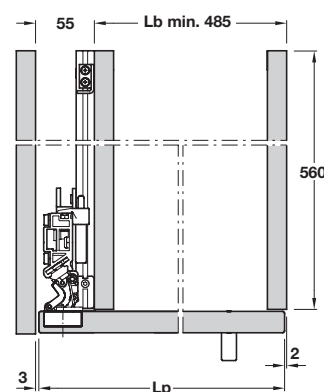
Unique system for single leaf doors that open as conventional doors then push away from view back into the cabinet.



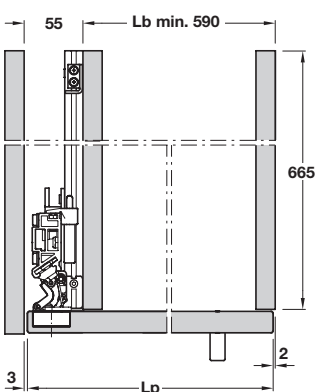
- > Finetta Spinfront 30/50
- > Range:
  - For door height: **1990 - 2200 mm/2200 - 2700 mm**
  - For cabinet depth: **560/665 mm**
  - Max. door weight for 3 hinges: **30 kg**
  - Max. door weight for 5 hinges: **50 kg**
  - Door thickness: **18-30 mm**
- > For left and right hand use
- > Set for 1 door comprises of pivot assembly with backing panel, hinges and sliding mechanism
- > Running gear guided by ball bearing mounted runners

## Installation dimensions

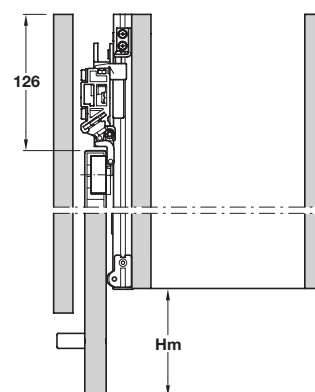
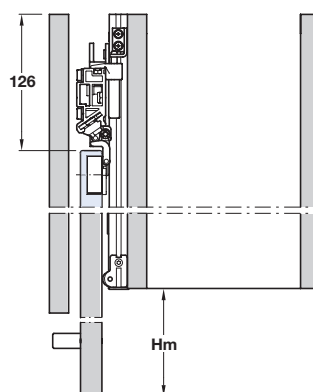
Internal installation depth 560 mm



Internal installation depth 665 mm



## Top view section of closed door



## Top view section of open door

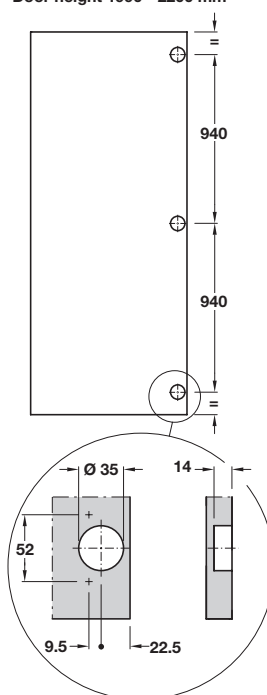
Cabinet width = Lb

Door leaf width = Lp = Lb + 50

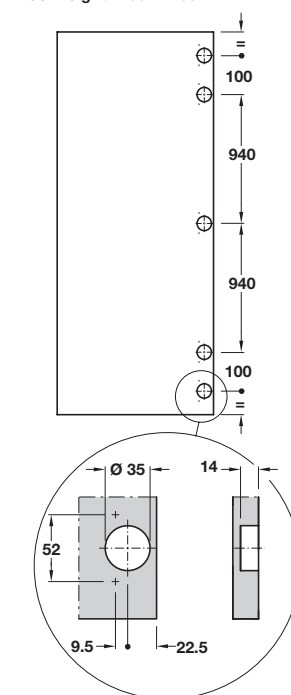
Door overlay = Hm = Lp - 560 (665) + 126

## Drilling pattern

Door height 1990 - 2200 mm



Door height 2200 - 2700 mm



## Application

