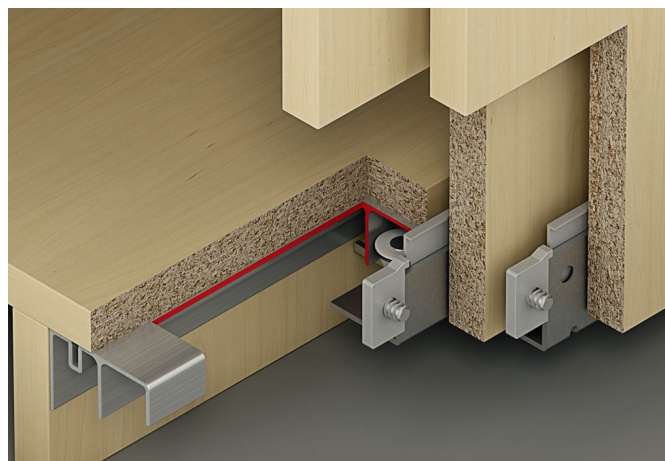
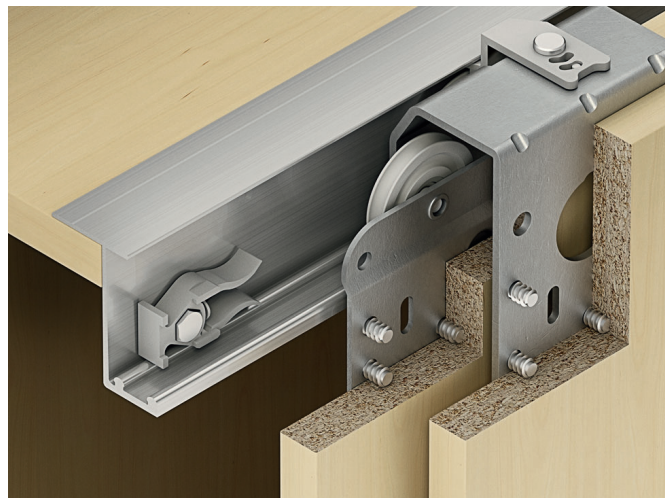
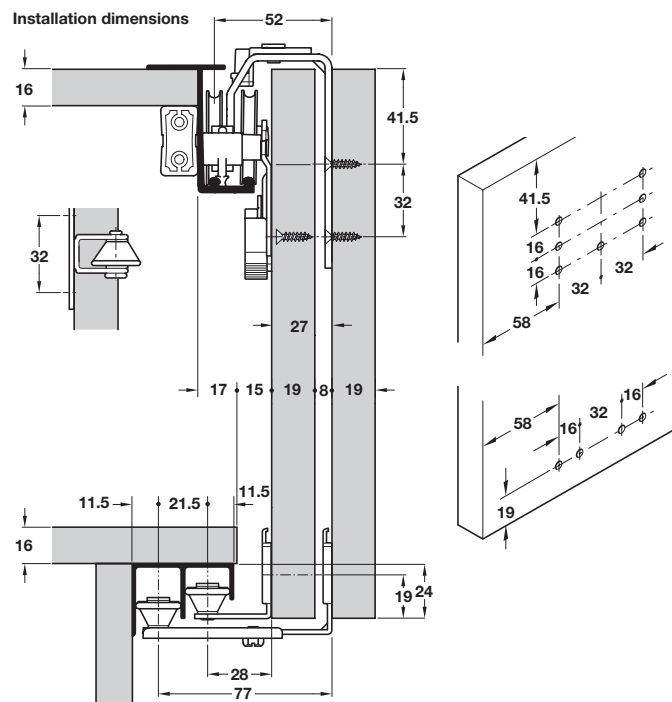


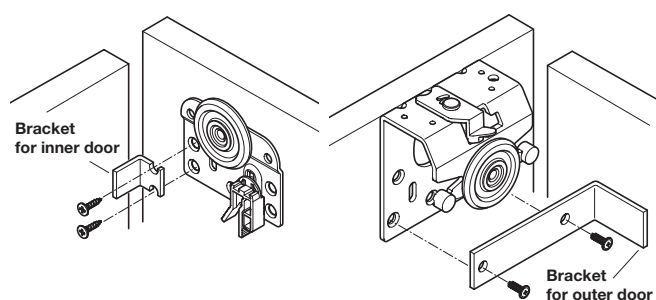
SLIDO CLASSIC 50 VF P SLIDING DOOR SYSTEM

Good quality system with concave running gears for excellent running characteristics, suitable for residential, commercial and industrial applications.

- > Slido Classic 50 VF P
- > Range:
 - Max door weight **50 kg**
 - For door thickness **18-21** or **22-25 mm**
- > Fitting instructions included
- > Soft close Smuso, for 18-21 mm door thickness shown on page 23 (for two door fitting set only)



Follower bracket



Note: A spacer plate must be installed between top panel and soft close mechanism. The left door must always be the outer door

- > For use with Smuso CD mechanism
- > For door thickness **18-21** mm only
- > Bracket for inner door, 19 x 19.5 x 22.5 mm
- > Bracket for outer door, 25 x 86 x 44.5 mm
- > Galvanized steel
- > Order qty: 1 pc



Cat. No.

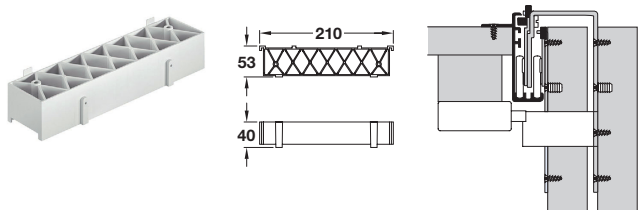
For inner door

405.11.225

For outer door

405.11.226

Spacer plate



- > For screw fixing underneath cabinet top
- > For left or right hand use
- > Grey plastic
- > Order qty: 1 pc

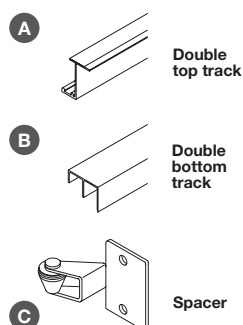


Cat. No.

Spacer plate

405.11.401

Slido Classic 50 VF P tracks and spacer



> Order tracks and spacer separately

A Double top running track, for screw fixing, silver coloured anodised aluminium

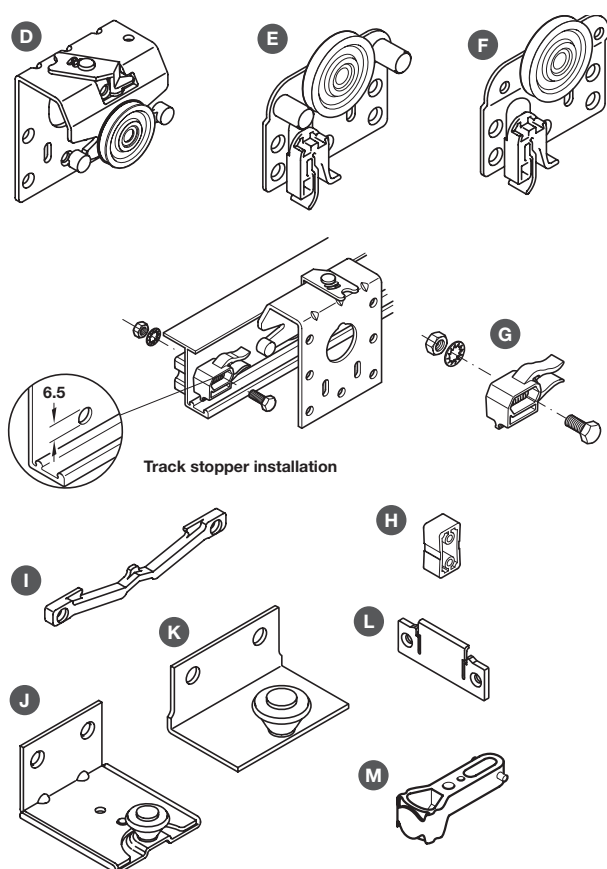
B Double bottom running track, for screw fixing, silver coloured anodised aluminium

C Spacer, for screw fixing to rear door, distance 20 mm, galvanized steel with plastic roller



Item	2.5 m	3.5 m
A Double top running track	400.52.962	400.52.963
B Double bottom running track	400.52.954	400.52.955
Additional items	Order qty.	Cat. No.
C Spacer	1 pc	400.60.000

Slido Classic 50 VF P fitting set for 2 or 3 doors



> Fitting set includes:

D Running gear, for outer door, plastic roller with ball bearing, with pre-mounted anti-derailment device, galvanized steel

E Running gear, for inner door, with bolts, plastic roller with ball bearing, galvanized steel

F Running gear, for inner door, without bolt, plastic roller with ball bearing, galvanized steel

G Track stopper, for mounting in double top running track, grey plastic

H Stabilising block, for double top running track, grey plastic

I Centre door stopper, grey plastic

J Bottom guide, for outer door, with plastic guide, galvanized steel

K Bottom guide, for inner door, with plastic guide, galvanized steel

L Clip for bottom guide, plastic

M Bottom track stopper, white plastic

> Order qty: 1 set

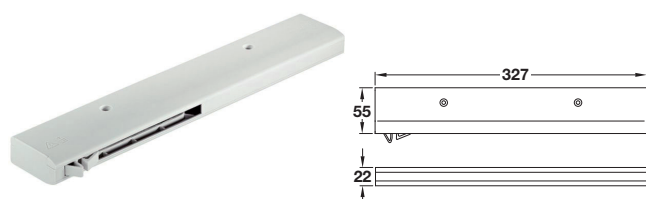


Item	For 2 doors	For 3 doors
D Running gear, for outer door	2 pcs	2 pcs
E Running gear, for inner door	1 pc	2 pcs
F Running gear, for inner door	1 pc	2 pcs
G Track stopper	2 pcs	2 pcs
H Stabilising block	2 pcs	2 pcs
I Centre door stopper	-	1 pc
J Bottom guide, for outer door	2 pcs	2 pcs
K Bottom guide, for inner door	2 pcs	4 pcs
L Clip for bottom guide	4 pcs	6 pcs
M Bottom track stopper	2 pcs	2 pcs
For 18-21 mm door thickness	400.51.190	400.51.191
For 22-25 mm door thickness	400.51.197	400.51.198



Screw fix running gear E with the bolts always on the outside, towards the side panel

Smuso CD soft closing mechanism



Order follower bracket and spacer plate separately, shown on page 22

> For max. sliding door weights **50 kg**

> For two door fitting set only

> For screw fixing underneath or above cabinet top

> For left or right hand use

> Light grey plastic

> Order qty: 1 pc (1 pc required per door)



For door weight	Cat. No.
Up to 50 kg	405.11.107

PAGE AMENDED
05.07.18/2

SALES DEPARTMENT 0800 171 2909

TECHNICAL SUPPORT 0800 171 2908