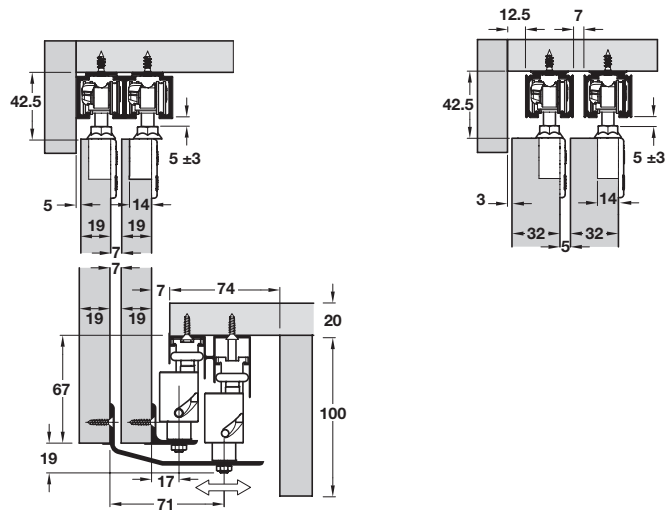
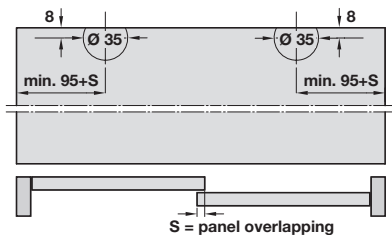
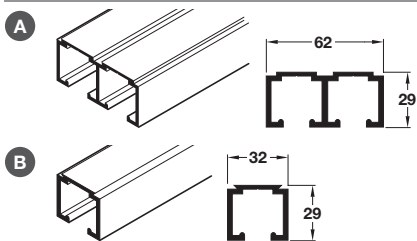


Straight sliding top hung half overlay cupboard doors, for budget domestic and light commercial use.

- > Häfele System 10
- > Range:
 - Max. door weight **50/80 kg**
 - Door thickness **19-32 mm**
- > Note: For double doors more than 19 mm thick use two single top tracks instead of double track



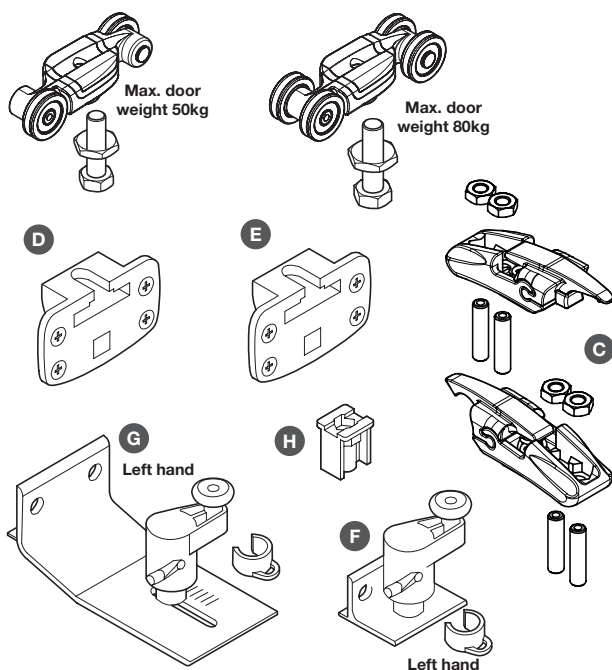
Häfele System 10 tracks




- > Order 2x single or double track
A Double top track, pre-drilled for screws, silver anodised aluminium
B Single top track, pre-drilled for screws, silver anodised aluminium
> Order qty: 1 pc

Item	3.0 m
A Double top track	401.18.930
B Single top track	401.17.930

Häfele System 10 Mixfront fitting sets

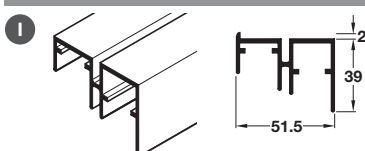


- > Fitting set includes:
 - C Track stopper, for top track reversible buffer, adjustable retaining force, black plastic
 - D Trolley hanger, for inner or outer doors, screw fixing, with ball bearing mounted nylon roller, adjustable, nickel-plated zinc alloy
 - or E Trolley hanger, for inner or outer doors, screw fixing, with ball bearing mounted nylon roller adjustable, nickel-plated zinc alloy
 - F Guide, for inner door, screw fixing, left and right handed, zinc alloy base plate
 - G Guide, for outer door, screw fixing, left and right handed, zinc alloy base plate
 - H Guide stopper, for bottom guide channel, black plastic
 - > Order qty: 1 set for inner door and 1 set for outer door
- Fixings included**



Item	For inner door	For outer door
C Track stopper	2 pcs	2 pcs
D Trolley hanger	2 pcs	2 pcs
or E Trolley hanger	2 pcs	2 pcs
F Guide	1 pair	-
G Guide	-	1 pair
H Guide stopper	2 pcs	2 pcs
Door weights up to 50 kg	401.19.002	401.19.003
Door weights up to 80 kg	401.19.004	401.19.005

Häfele System 10 bottom guide profile



- > Silver anodised aluminium
- > Order qty: 1 pc

Item	3.0 m
I Double bottom guide profile	401.25.930