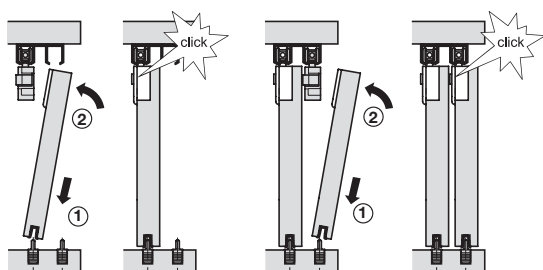


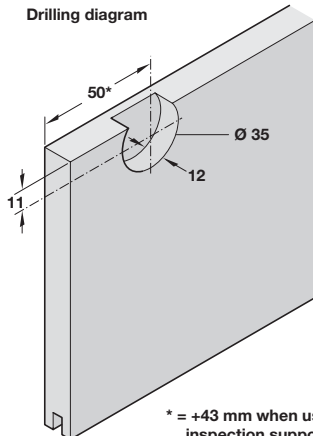
# SLIDO CLASSIC 20 IF C SLIDING DOOR SYSTEM

High quality system for straight sliding top hung doors, for domestic or commercial furniture. Fitting sets are available with or without a soft closing mechanism.

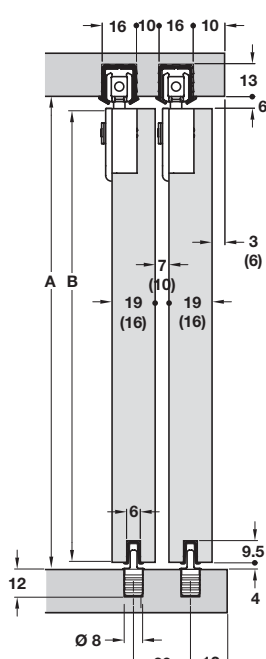
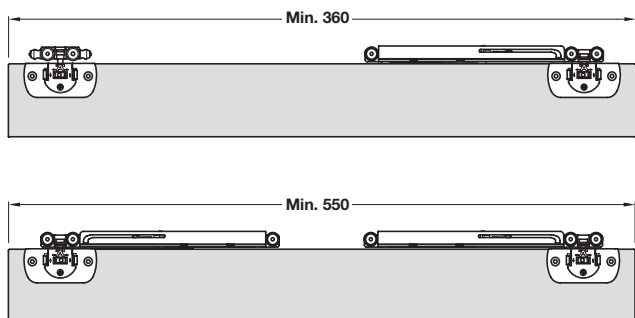
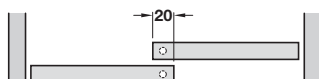
- > Slido Classic 20 IF C:
- > Range:
  - Max. door weight **20 kg**
  - Max. door height **1400 mm**
  - Max. door width **1250 mm**
  - For door thickness **16-19 mm**
- > Height adjustment  $\pm 2$  mm on running gear using adjustment wheel



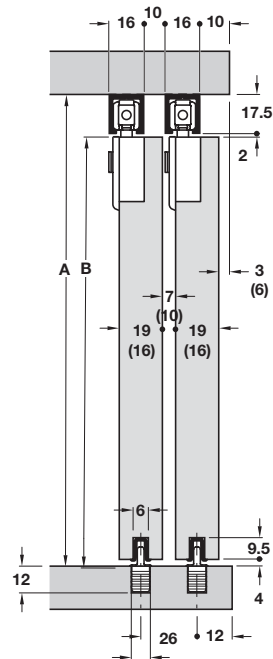
Drilling diagram



Door overlap



With groove mounting tracks  
B = A - 10 mm

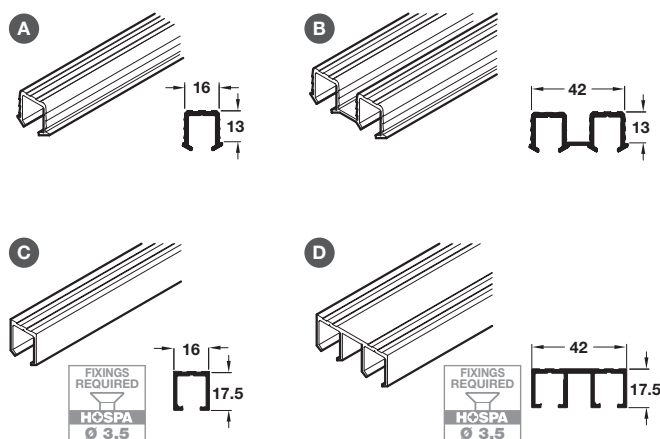


With screw fixing tracks  
B = A - 23.5 mm



> Tracks and fitting sets must be ordered separately, shown on page 53

## Slido Classic top tracks



- > Order single or double tracks depending on application
- > For min 19 mm board thickness

A Single top track, for 16 mm groove, bright aluminium

B Double top track, for 16 mm groove, bright aluminium

C Single top track, for screw fixing, silver coloured anodized aluminium

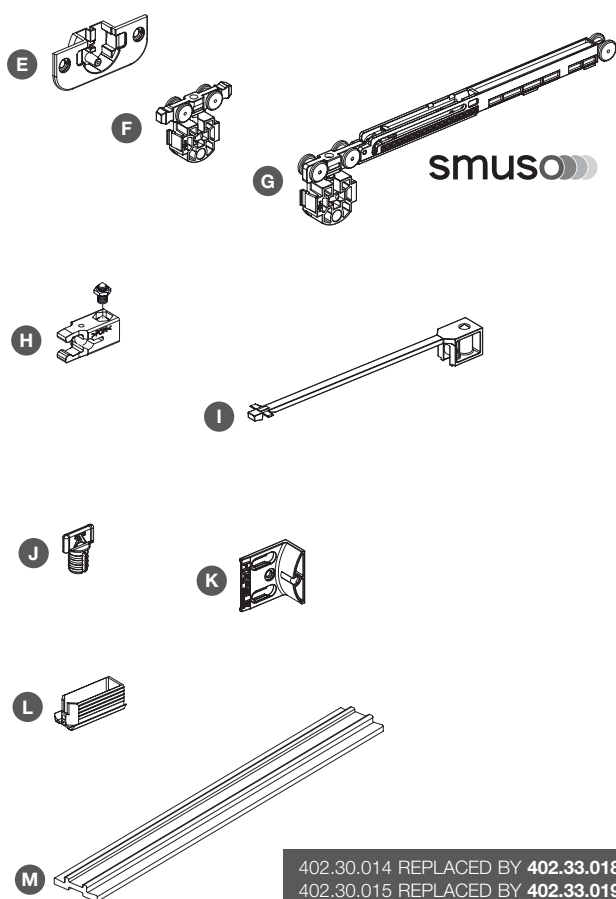
D Double top track, for screw fixing, silver coloured anodized aluminium

- > Order qty: 1 pc



Length	2.5 m	3.5 m
A Single track, groove mounted	402.33.642	402.33.643
B Double track, groove mounted	402.33.652	402.33.653
C Single top track, screw fixing	402.30.642	402.30.643
D Double top track, screw fixing	402.30.652	402.30.653

## Slido Classic 20 IF C fitting set for 2 doors



- > Fitting set includes:

E Housing, for screw fixing, grey plastic

F Running gear, with friction bearing, for clip fixing into housing, grey plastic

G Running gear, with soft and self closing and friction bearing, grey plastic

H Clip in door stopper, for top track, grey plastic

I Door stopper, for soft and self closing mechanism, for top track, grey plastic

J Guide, for press fitting, grey plastic

K Stop bracket, with buffer, galvanized steel

L Inspection support, for use as inspection cover, grey plastic

M Mounting aid, for track installation, red plastic

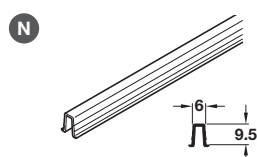
- > Order qty: 1 set



Fitting set for 2 doors	without soft close	with soft close
E Housing	4 pcs	4 pcs
F Running gear	4 pcs	2 pcs
G Running gear, soft close	-	2 pcs
H Clip in door stopper	4 pcs	2 pcs
I Door stopper, for soft close	-	2 pcs
J Guide	2 pcs	2 pcs
K Stop bracket	1 pc	1 pc
L Inspection support	2 pcs	-
M Mounting aid	1 pc	1 pc
Cat. No.	402.33.018	402.33.019
Additional items		
E Housing	-	402.30.107
G Running gear, soft close	-	402.30.123
H Clip in door stopper	-	402.30.303
I Door stopper, for soft close	-	402.30.321

402.30.014 REPLACED BY **402.33.018**  
 402.30.015 REPLACED BY **402.33.019**  
 402.30.100 REPLACED BY **402.30.107**  
 402.30.110 REPLACED BY **402.30.123**  
 402.30.300 REPLACED BY **402.30.303**  
 402.32.301 REPLACED BY **402.30.321**

## Slido Classic bottom guide track



- > For press fitting and gluing into 6 mm groove
- > Ribbed, grey plastic
- > Order qty: 1 pc



Length	2.5 m	3.5 m
N Single bottom guide track	402.30.802	402.30.803