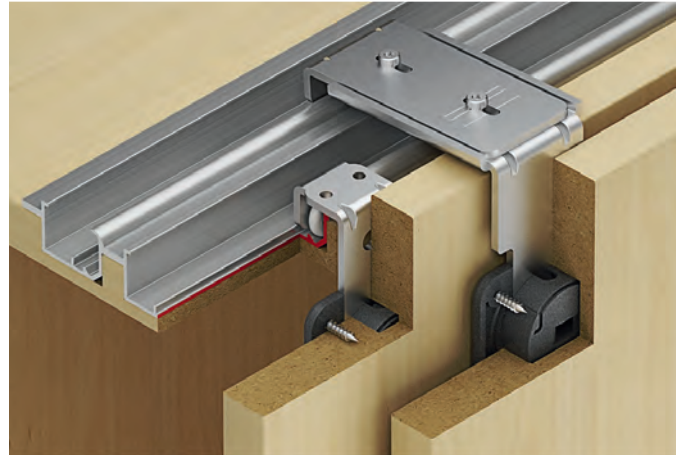


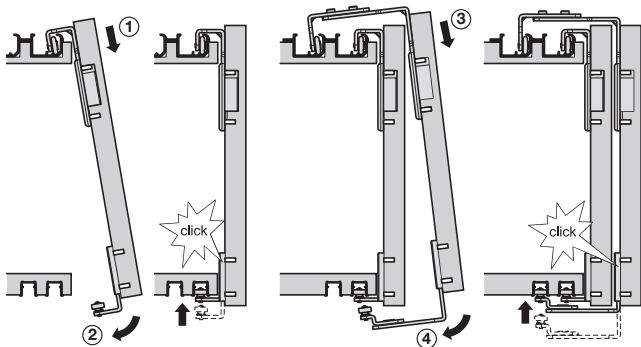
SLIDO CLASSIC 20/40 VF T SLIDING DOOR SYSTEM

Good quality system for pairs of overlaying cabinet doors, ideal for residential and commercial applications including high volume cabinet manufacturers.

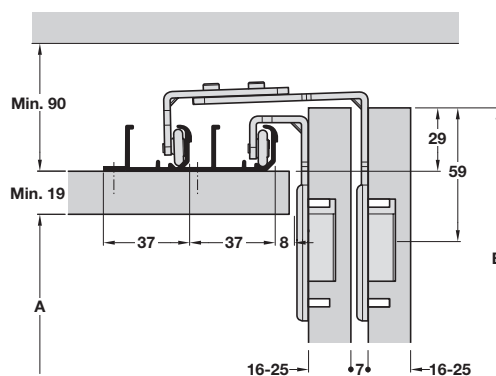
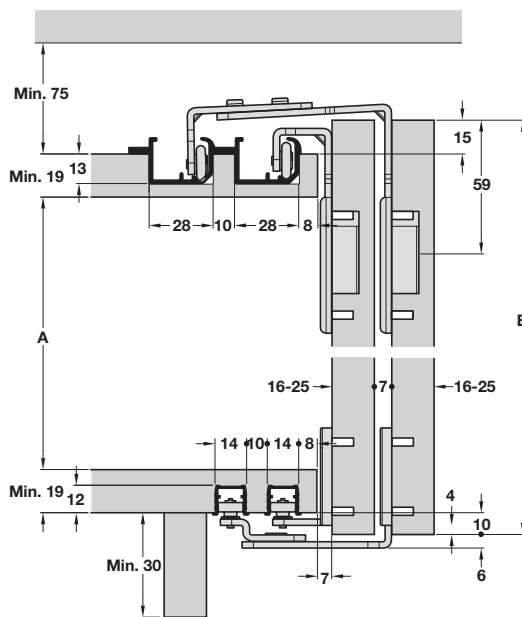
- > Slido Classic 20 VF T
 - > Range: Max. door weight **20 kg**
 - Max. door height **1800 mm**
 - Max. door width **1000 mm**
 - For door thickness **16-25 mm**
- > Slido Classic 40 VF T
 - > Range: Max. door weight **40 kg**
 - Max. door height **2400 mm**
 - Max. door width **1250 mm**
 - For door thickness **16-25 mm**
- > Min. 350 mm door width with 1 soft close, min. 520 mm door width with soft close on both sides
- > Height adjustment ± 2 mm on running gear
- > Housing and running gear for screw fixing, guide for screw fixing to door



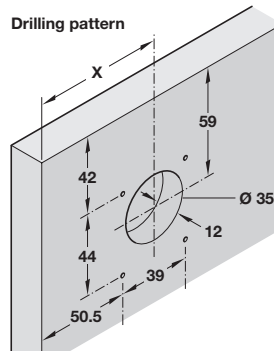
Door installation



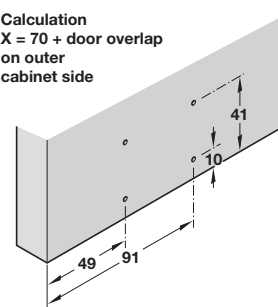
Installation dimensions



Drilling pattern

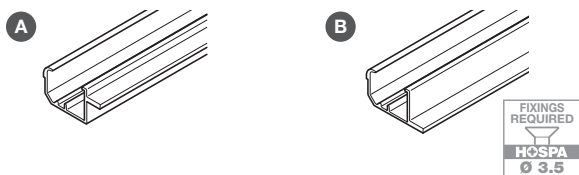


Calculation
 $X = 70 + \text{door overlap on outer cabinet side}$



> Tracks and fitting sets must be ordered separately, shown on page 59

Slido Classic 20/40 VF T top tracks



> Order groove mounting or screw fixing track as required

A Single top track, for press fitting and glue fixing into 28 mm groove, for min. 25 mm panel thickness, silver coloured anodised aluminium

B Single top track, for screw fixing, for min. 19 mm panel thickness, silver coloured anodised aluminium

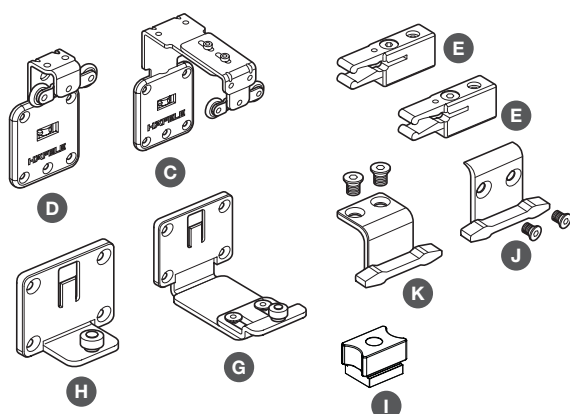
> Order qty: 1 pc



> Two tracks must be mounted in parallel in order to make a double running track

Item	2.5 m	3.5 m
A Top track, groove mounting	402.31.672	402.31.673
B Top track, screw fixing	402.31.682	402.31.683

Slido Classic 20/40 VF T fitting sets, for 2 or 3 doors



> Fitting sets include:

C Running gear for outer door, galvanized steel, with friction bearing, with housing for screw fixing into Ø 35 mm hole, black plastic

D Running gear for inner door, galvanized steel, with friction bearing, with housing for screw fixing into Ø 35 mm hole, black plastic

E Top clip-in door stopper, with retainer, black plastic

F Soft and self closing mechanism, or sliding into top track, grey/black plastic

G Bottom guide for outer door, screw fixing, galvanized steel and black plastic

H Bottom guide for inner door, screw fixing, galvanized steel and black plastic

I Bottom door stopper, for bottom guide track, black plastic

J Clip-in stopper for outer door, with retainer, black plastic

K Clip-in stopper for inner door, with retainer, black plastic

L Release device for outer door, for soft and self closing mechanism, galvanized steel

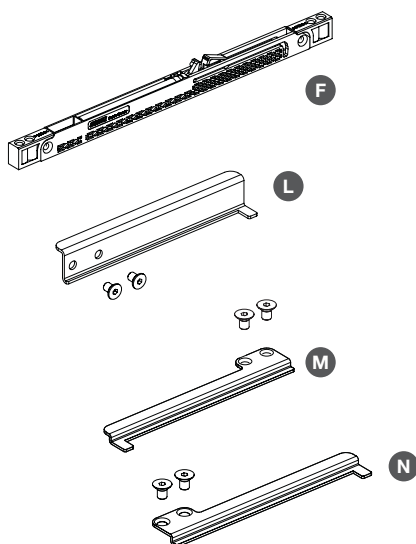
M Release device for inner door, left hand, for soft and self closing mechanism, galvanized steel

N Release device for inner door, right hand, for soft and self closing mechanism, galvanized steel

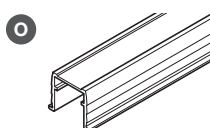
> Order qty: 1 set

Fitting set	For 2 doors		For 3 doors	
Soft close	without	with	without	with
C Housing, outer	2 pcs	2 pcs	2 pcs	2 pcs
D Housing, inner	2 pcs	2 pcs	4 pcs	4 pcs
E Clip-in stopper	4 pcs	-	4 pcs	-
F Soft close	-	4 pcs	-	6 pcs
G Guide, outer	2 pcs	2 pcs	2 pcs	2 pcs
H Guide, inner	2 pcs	2 pcs	4 pcs	4 pcs
I Bottom stopper	4 pcs	4 pcs	4 pcs	4 pcs
J Stopper, outer	2 pcs	-	2 pcs	-
K Stopper, inner	2 pcs	-	2 pcs	-
L Release, outer	-	1 pc	-	1 pc
M Release, left	-	1 pc	-	1 pc
N Release, right	-	-	-	1 pc
Set 20 VF T	402.31.008	402.31.010	402.31.009	402.31.012
Set 40 VF T	402.31.004	402.31.006	402.31.005	402.31.013

smuso



Slido Classic 20/40 VF T bottom guide track



> For press fitting and glue fixing into 14 mm groove

> For min. 19 mm panel thickness

> Silver coloured anodised aluminium

> Order qty: 1 pc

Length	2.5 m	3.5 m
O Bottom guide track	402.31.632	402.31.633