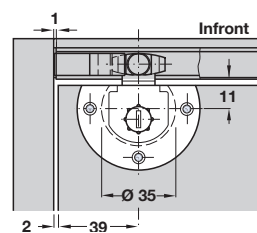
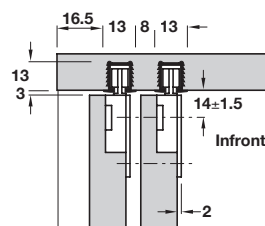


FINGERFIX SLIDING DOOR SYSTEM

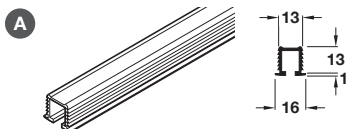
Straight sliding top hung cupboard door gear for domestic or light duty commercial furniture.
Infront (inset) running gear.

- > Fingerfix
- > Range:
 - Max. door panel weight **12 kg**
 - Min. door thickness **16 mm**
- > Running gear has ± 1.5 mm height adjustment
- > Note: Housing must be unscrewed to remove door

Infront



Finger Fix Infront tracks

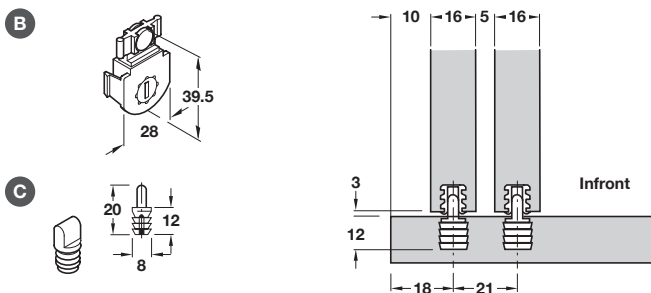


A Top track, ribbed, press-fit installation, silver coloured plastic

> Order qty: 1 pc (2.0 m length)

Item	Cat. No.
A Top track	404.71.902

Finger Fix Infront fittings

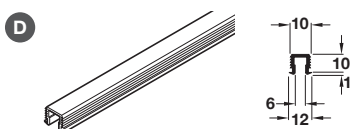


> Fitting set consists of:

- B Running gear, **Infront** with clip, for quick mounting, black plastic
- C Bottom guide, **Infront** plug-fit in cabinet floor, natural coloured nylon

Item	Order qty. per door	Cat. No.
B Running gear, Infront	2 pcs	404.73.311
C Bottom guide, Infront	1 pc	400.46.400

Finger Fix Infront guide profile



D Bottom guide profile, ribbed, press-fit installation, silver coloured plastic

> Order qty: 1 pc (2.0 m length)

Item	Cat. No.
D Bottom guide profile	404.13.921