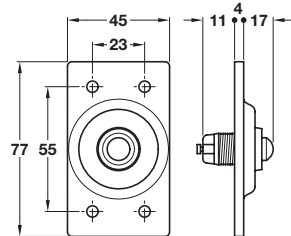


Kirkpatrick rectangular bell push, malleable iron



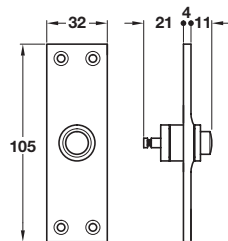
- > Face fixing
- > Malleable iron
- > Order qty: 1 pc



Finish
Black

Cat. No.
986.07.633

Bell push, malleable iron



Note: ± 5 mm tolerance on dimensions

- > Face fixing
- > Malleable iron
- > Order qty: 1 pc



Finish

Smooth black powder coated

Cat. No.

986.01.063

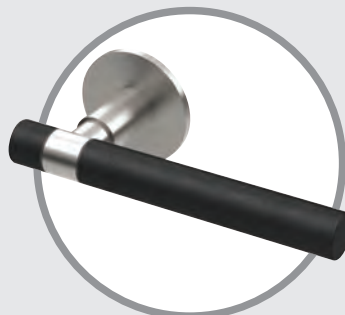
RELATED PRODUCTS



Stainless steel ball bearing butt hinge, 102 x 76 mm

Ideal for most applications, tested to BSEN1935.

- > Product shown is **926.90.390**
- > For full details see **Section 3** page **23**



Soft touch lever handles, grade 316 stainless steel

High quality UK manufactured grade 316 stainless steel handles.

- > Product shown is **902.21.813**
- > For full details see **Section 1** page **7**



Dorma TS 72 VBC overhead door closer

German efficiency in door controls.

- > Product shown is **931.06.519**
- > For full details see **Section 4** page **21**