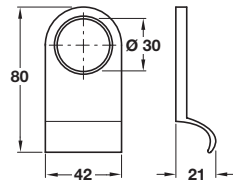


Round cylinder pull, brass

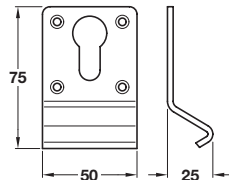


- > Cylinder holds pull in place
- > Brass
- > Order qty: 1 pc

Finish
Satin chrome

Cat. No.
901.56.364

Euro profile cylinder pull, aluminium



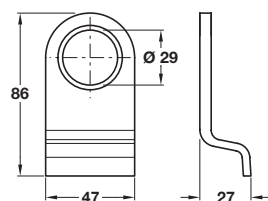
- > Face fixing
- > Aluminium
- > Order qty: 1 pc

Finish
Satin anodised

Cat. No.
904.52.161



Round cylinder pull, malleable iron



- > Malleable iron
- > Order qty: 1 pc

Finish
Smooth black powder coated

Cat. No.
900.56.853

Note: ±5 mm tolerance on dimensions