

FINGER PROTECTION FOR DOORS WITH HINGES

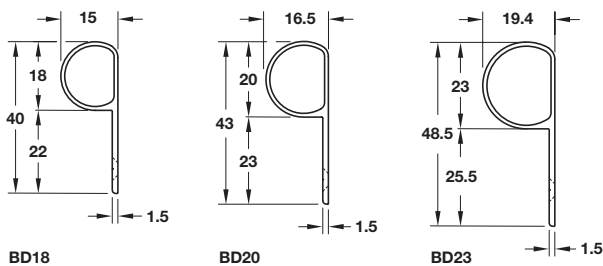
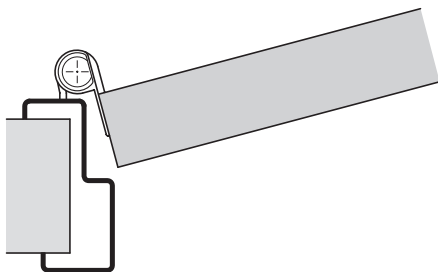
Aluminium hinge guards in three sizes for flush doors with hinges.



3

Door Hinges: Finger Guards

Athmer BD hinge guard profile for flush doors



- > For door gap between door and frame on push side
- > For flush interior doors with hinges
- > Length = 1750 mm
- > Cutting set included for 2-piece installation
- > Screw fixing
- > Silver coloured anodised aluminium
- > Order qty: 1 pc



Model	For hinge Ø	Cat. No.
BD18	18 mm	950.15.621
BD20	20 mm	950.15.346
BD23	23 mm	950.15.246

RELATED PRODUCTS



Startec mortice actuated panic latch

Safety in escape is life saving, fully tested escape ironmongery.

- > Product shown is **911.52.329**
- > For full details see **Section 5** page **201**



FSB 1004 lever handles, bronze

High quality German manufacturing in door handles.

- > Product shown is **900.20.751**
- > For full details see **Section 1** page **56**



Double euro profile cylinder

Security cylinders, fully tested.

- > Product shown is **916.91.000**
- > For full details see **Section 5** page **76**