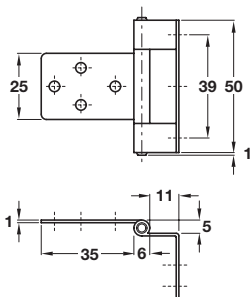
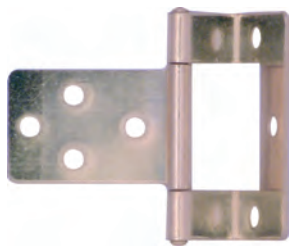


Steel cranked flush hinge



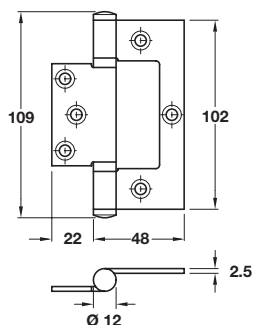
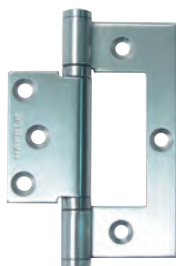
- > For medium duty applications
- > Normally for 10 mm door thicknesses
- > With fixed pin
- > Non-mortice
- > Steel
- > Order qty: 1 pc



Finish
Electro brass

Cat. No.
351.96.520

Stainless steel flush butt hinge, 102 x 70 mm

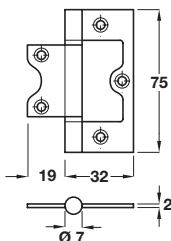


- > Unhanded
- > Maximum adjusted door weight 45 kg
- > Non-mortice
- > Suitable for timber or aluminium frames
- > Fixed pin, two ball bearing knuckles
- > Grade 304 stainless steel
- > Order qty: 1 pc



Finish	Cat. No.
Satin stainless steel	926.97.001
Polished stainless steel	926.97.004

Steel flush butt hinge, 75 x 51 mm



- > Provides 180° door opening
- > Flush fixed pin
- > No recessing of door or frame
- > Steel
- > Order qty: 1 pc



Finish	Cat. No.
Satin chrome-plated	926.89.104
Polished chrome-plated	926.89.102