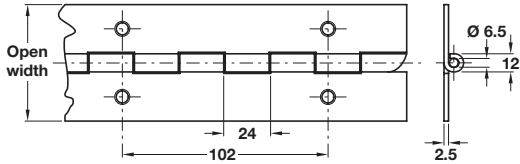


**Stainless steel, anti-ligature continuous hinge, 2000 x 76 mm**



- > Heavy duty; max. adjusted door weight 120 kg
- > Suitable for 44 mm thick doors
- > 40 holes per hinge
- > CP grade 4
- > Avoids the necessity for finger guards on pull side of door
- > Order fixing screws separately
- > Stainless steel, mill finish, stainless steel pin
- > Order qty: 1 pc

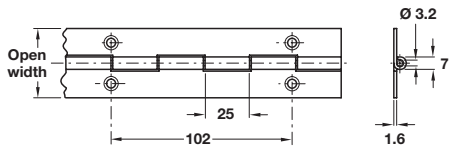


Length x open width	Cat. No.
2000 x 76 mm	926.91.680

**Stainless steel continuous hinge, 1829 mm**



- > 1829 mm length
- > Available in 2 widths: 39 and 51 mm
- > Medium duty
- > 36 holes per hinge
- > Order fixing screws separately
- > Stainless steel, mill finish, stainless steel pin
- > Order qty: 1 pc (1829 mm length)

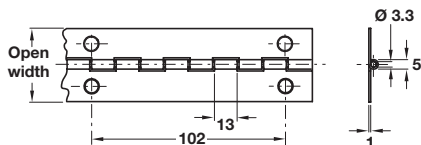


Open width	Cat. No.
39 mm	351.13.000
51 mm	351.13.010

**Grade 304 stainless steel continuous hinge, 1834 mm**



- > 1834 mm length
- > Available in 3 widths: 32, 38 and 51 mm
- > Light duty
- > 36 holes per hinge
- > Order fixing screws separately
- > Grade 304 polished stainless steel, stainless steel pin
- > Order qty: 1 pc (1834 mm length)



Open width	Cat. No.
32 mm	351.14.000
38 mm	351.14.010
51 mm	351.14.020

TOH AH 2016, © Hafele U.K. Ltd 2016. Dimensional data not binding. We reserve the right to alter specifications without notice.