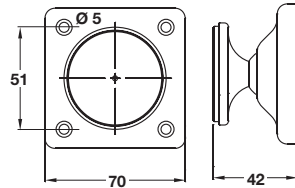
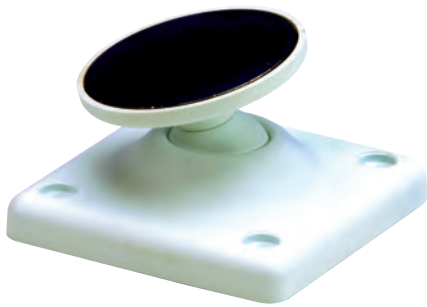


## Low profile keeper plate



- > To suit electro-magnetic door retainers shown left
- > Only 20 mm deep
- > Order fixing screws separately
- > Order qty: 1 pc



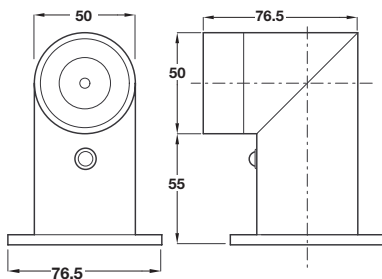
Not suitable for use on fire doors

Finish  
White

Cat. No.  
912.05.088

4

## Wall/floor mounted electro-magnetic door retainer



- > 24V dc
- > Integrated release button
- > Powerful ejector pin
- > Holding strength 400N
- > Swivel keeper plate included
- > Steel tube and plate
- > Order fixing screws separately
- > Order qty: 1 pc



Not suitable for use on fire doors

Finish  
Satin anodised aluminium

Cat. No.  
912.05.083



- > Note when using door retainers:  
Floor mounted patterns would be suitable for floor springs.  
Wall mounted versions for over door closers.  
Jamb pattern closers should be mounted in the same horizontal plane as the closing device.  
Failure to put the retainer in these positions could result in door warpage.



Power supply is shown on page 43