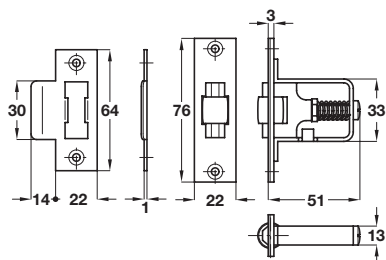
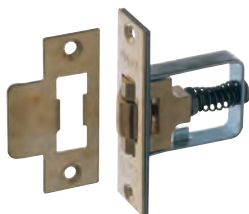
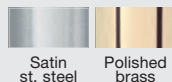


Mortice roller catch, case size 51 mm

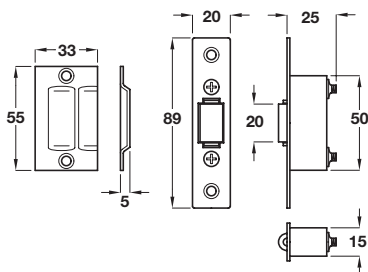


- > Adjustable roller bolt
- > Frame: Zinc coated steel
- > Forend: Square, 2 piece. Stainless steel or brass
- > Strike plate: Square, flat. Included. Stainless steel or brass
- > Duty: Full size doors, minimum thickness 30 mm
- > Order qty: 1 pc



Finish	Cat. No.
Satin stainless steel	911.24.010
Polished brass	911.24.011

Mortice roller catch, case size 25 mm

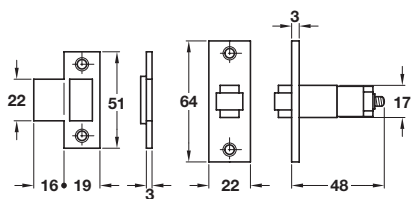
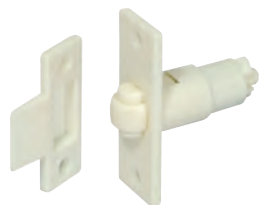


- > Adjustable roller bolt
- > Case: Stainless steel
- > Forend: Square, 1 piece. Stainless steel
- > Strike plate: Square. Included. Stainless steel
- > Duty: Full size doors, maximum thickness 30 mm
- > Order qty: 1 pc



Finish	Cat. No.
Satin stainless steel	911.24.012

Mortice roller catch, size 48 mm

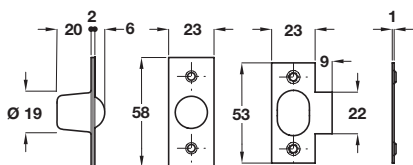


- > 19 mm/Adjustable roller bolt
- > Frame: Nylon
- > Forend: Square, nylon
- > Strike plate: Square, flat, nylon, included
- > Duty: Full size doors, minimum thickness 32 mm
- > Order qty: 1 pc



Finish	Cat. No.
White	911.62.295

Bales catch



Note: ±3 mm tolerance on dimensions

- > Sprung ball bearing catch
- > Mild steel
- > Order qty: 1 pc



Finish	Cat. No.
Nickel-plated	911.24.066
Electro-brassed	911.24.055