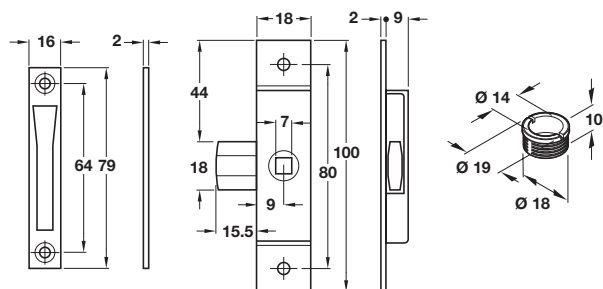


Startec Rim/Mortice budget lock

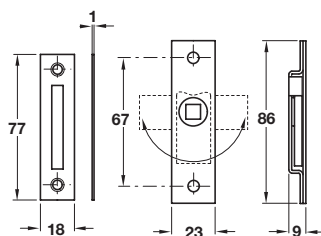


- > For screw fixing or recess mounting
- > Order lock and strike plate separately
- > Galvanized steel lock and strike plate, bright brass sleeve
- > Order fixing screws separately
- > Order qty: 1 pc



Item	Cat. No.
Lock	911.61.060
Strike plate	911.61.063
Sleeve (for recess mounting)	911.61.065

Small rim budget lock

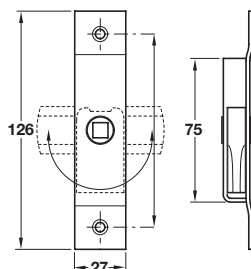


- > Strike plate included
- > Order tee key separately; 230.09.920
- > Steel
- > Order fixing screws separately
- > Order qty: 1 pc



Finish	Cat. No.
Zinc-plated	230.09.900

Large rim budget lock



- > Strike plate not included
- > Order tee key separately; 230.09.920
- > Steel
- > Order fixing screws separately
- > Order qty: 1 pc



Finish	Cat. No.
Zinc-plated	230.09.910



Budget lock tee key 230.09.920 is shown on page 107