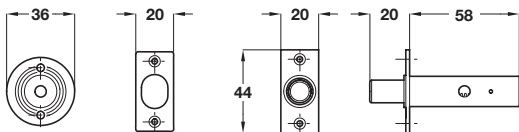
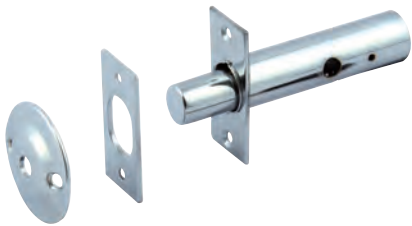


ENTRANCE DOOR SECURITY FITTINGS

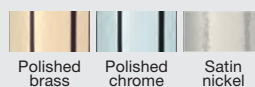
Security devices, door viewers and security door chains.

Mortice door security bolt, brass



Note: ± 3 mm tolerance on dimensions

- > Key turn operated (key not included)
- > To suit doors up to 44 mm thick
- > Backset 32 mm
- > Comprises:
 - 1x Bolt,
 - 1x Strike plate
 - 1x Escutcheon
- > Brass/Steel
- > Order qty: 1 pc



Finish	Cat. No.
Polished brass	911.62.320
Polished chrome	911.62.321
Satin nickel	911.62.322



Order key separately, Cat. No. 911.62.275 shown below

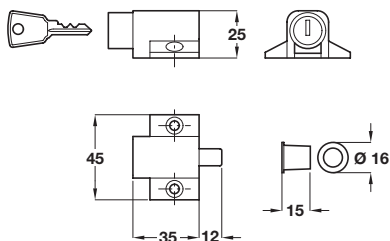
Security bolt key



- > To suit all rack security bolts
- > Order qty: 1 pc

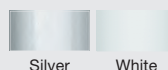
	Cat. No.
Security bolt key	911.62.275

Patio door lock



Note: ± 3 mm tolerance on dimensions

- > To suit timber, metal and PVCu hinged and sliding doors
- > Press to lock, key to unlock
- > Saw resistant
- > Ferrule included
- > Cut key included
- > Steel
- > Order qty: 1 pc



Finish	Cat. No.
Silver	971.00.801
White	971.00.807



Co-ordinating entrance door furniture such as numerals and door knockers are shown in **Section 2**