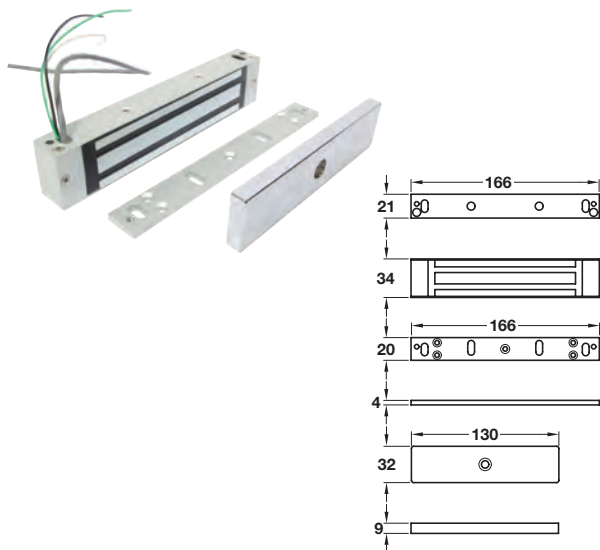


Micro electromagnetic lock



- > Single door, single swing unit
- > Holding force 180 kg
- > Always fail unlocked
- > Monitored
- > Steel armature fixed through door provides secure mounting
- > 12V/24V DC
- > Current consumption - 630 mA @ 12V, 315 mA @ 24 V
- > Aluminium body
- > Order qty: 1 set

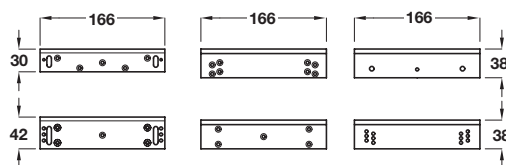


Cat. No.
Micro electromagnetic lock 912.05.060

Z and L bracket

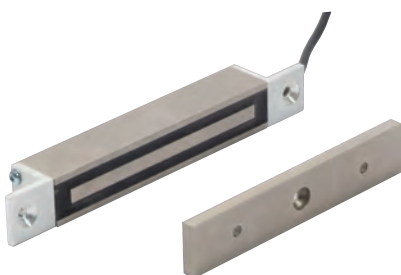


- > To convert magnet for inswinging doors
- > For use with micro electromagnetic lock shown above
- > Steel, silver finish
- > Order qty: 1 set

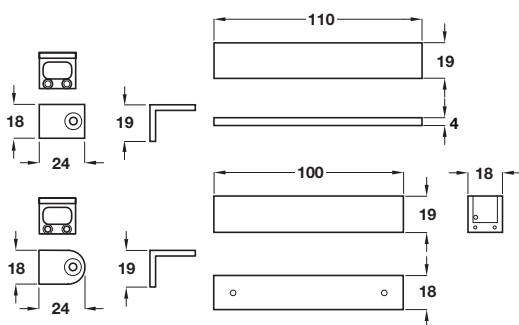


Cat.No.
Z and L bracket set 912.05.070

Nano electromagnetic lock



- > Mortice pattern
- > Suitable for cabinets and other small applications
- > Choice of brackets included
- > 2 m power cable included
- > Holding force: 10 kg @ 6V, 36 kg @ 12V, 42 kg @ 14V
- > Always fail unlocked
- > Operating voltage 6 to 15V DC
- > Hard nickel plated aluminium
- > Order qty: 1 set



Cat.No.
Nano electromagnet 912.05.090