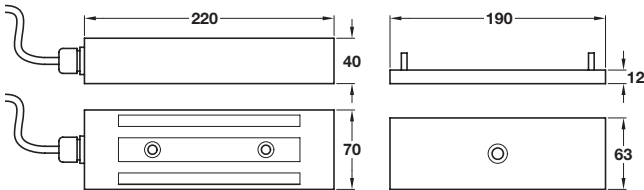


Weather proof electromagnetic lock



- > To suit outward opening single swing gates
- > Holding force 500 kg
- > Always fail unlocked
- > 12V/24V DC
- > Current consumption 250 mA @ 12V 500 ma @ 24V
- > Cable gland and 3 m 3 core cable included
- > Aluminium, brushed stainless steel cover
- > Order qty: 1 set



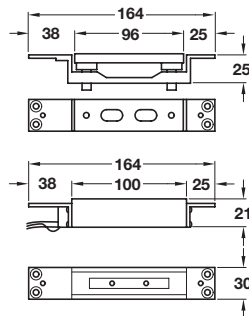
Unmonitored

Cat. No.
912.05.065

Shearlock, mortice fixing



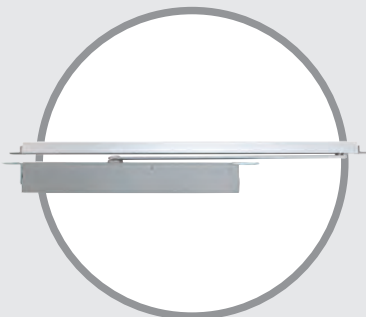
- > Door position switch
- > Shear force up to 1000 kg
- > Always fail unlocked
- > Monitored
- > 12V/24V DC
- > 1.5A pull in for 2 seconds
- > 0.5A continuous hold
- > Aluminium body
- > Order qty: 1 set



Shearlock

Cat. No.
912.05.066

RELATED PRODUCTS



Geze boxer single action concealed overhead door closer

German efficiency in door controls.

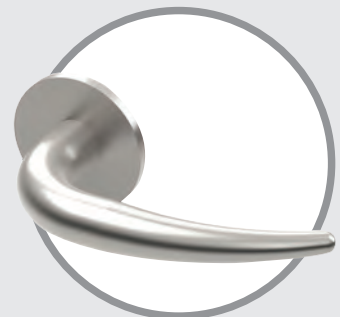
- > Product shown is **931.17.903**
- > For full details see **Section 4** page **29**



Häfele stainless steel ball bearing butt hinge, 102 x 76 mm

High quality grade 304 stainless steel hinge, tested to BSEN 1935.

- > Product shown is **926.90.203**
- > For full details see **Section 3** page **18**



Tusk lever handles, grade 316 stainless steel

Sophisticated in design, this lever handle is manufactured in grade 316 stainless steel.

- > Product shown is **902.21.620**
- > For full details see **Section 1** page **6**