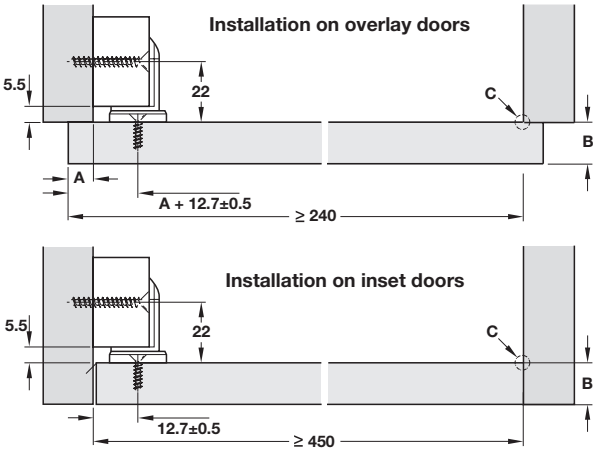


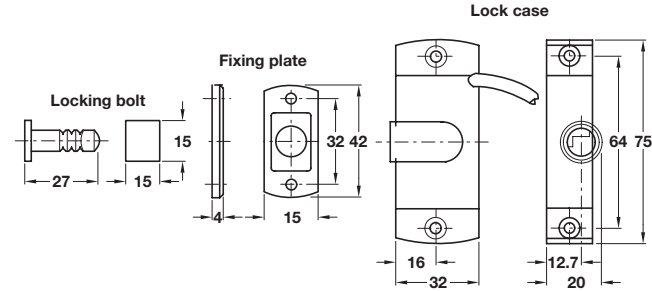
Dialock EFL 1 Furniture lock case



- > Application: For use in furniture and office equipment, such as roller shutters, flaps, hinged doors and drawers
- > For door widths:
  - min. 450 mm for overlay doors
  - min. 240 mm for inset doors
- > Operation: Electro-mechanical lock
  - Fail locked, i.e. locks when no power
  - Locking bolt is floating to compensate for any tolerances
- > Technical data:
  - Power supply: 12 V DC (Direct Current)
  - Continuous current consumption: 50 mA
  - Tensile load: >200 N (acc. to DIN 68 852)
- > Monitored version:
  - Contact rating, 5V 10mA maximum
- > Comprises:
  - 1x Lock case, nickel-plated zinc alloy
  - 1x Fixing plate, nickel-plated zinc alloy
  - 1x Locking bolt, grey plastic
  - 1x AMP plug connector
  - 1x Connecting cable, 1 or 5 m lengths
- > Order qty: 1 pc

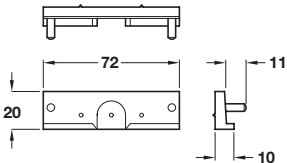


A = door overlay, B = door thickness, C = theoretical pivot point



| With cable length | Unmonitored | Monitored  |
|-------------------|-------------|------------|
| 1 m               | 237.56.000  | 237.56.030 |
| 5 m               | 237.56.004  | 237.56.034 |

Drilling template



- > For central locking lock cases
- > Order qty: 1 pc

|                   | Cat. No.   |
|-------------------|------------|
| Drilling template | 237.56.990 |



For help, advice and ordering of our full range of DIALOCK access control systems please get in touch with our Project Team, 0800 171 2907 or [estimating@hafele.co.uk](mailto:estimating@hafele.co.uk)