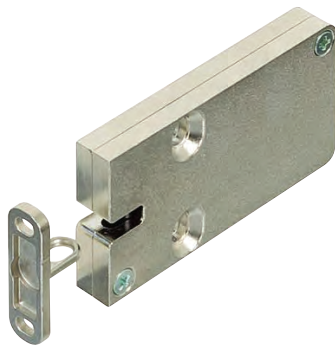


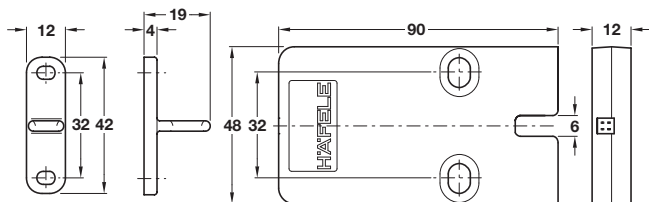
Dialock EFL 3 Furniture lock case



- > Application: For use in furniture and office/storage equipment such as roller shutters, flaps, hinged doors and drawers
- > For door width max. 200 mm, test installation required
- > Operation: Electric lock compensating tolerances in 3 directions with confirmation contact with mini-connector and RJ-10 connector
- > Technical data:
 - Power supply: 12V DC (direct current)
 - Current consumption ≤ 10 mA
 - Current open/closed: 100mA/40 ms
 - Tensile load: 1000 N
- > Comprises:
 - 1x Lock case, nickel-plated zinc alloy
 - 1x Locking plate, nickel-plated zinc alloy
- > Order qty: 1 pc

5

Door Locking and Security: Access Control



Item	Cat. No.
EFL 3	237.56.304
EFL 3C with monitoring function	237.56.305

Locking plate



- > For EFL 3 furniture lock case shown above
- > Screw fixing
- > Zinc alloy
- > Order qty: 1 pc

Monitoring contact	Cat. No.
Without	237.56.310
With	237.56.311



For help, advice and ordering of our full range of DIALOCK access control systems please get in touch with our Project Team, 0800 171 2907 or estimating@hafele.co.uk