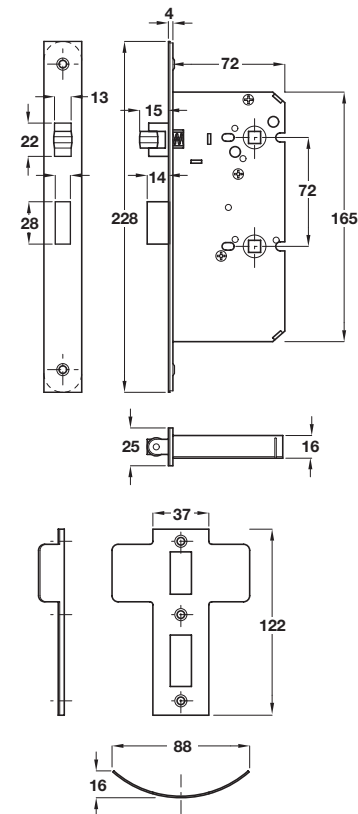
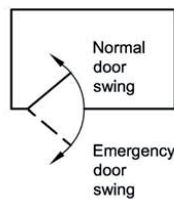


MORTICE ROLLER BOLT LOCKS AND LATCHES

Roller bolt locks and latches are ideal for use with double action pivot doors.

Roller bolt mortice bathroom lock



- > Roller bolt operated by lever handles from either side
- > Deadbolt operated by turn/release from either side
- > Ideal for use with double action pivot doors
- > Pierced to accept 38 mm centres horizontally and diagonally opposed bolt through lever furniture and horizontally opposed indicator furniture
- > Cruciform preformed strike plate included
- > Brass roller bolt, 12 mm projection
- > Brass deadbolt, 14 mm throw
- > Brass followers, 8 mm lever and 8 mm turn
- > Available with standard springing, for sprung levers and heavy duty springing, for unsprung levers
- > Grade 304 stainless steel forend and strike plate
- > Order qty: 1 pc



Backset 57 mm, case size 72 mm

Springing	Cat. No.
Standard	911.24.029
Heavy duty	911.24.030



- > Double action pivot sets are shown in **Section 4** on pages **55-58**
- > Emergency release door stops are shown in **Section 4** on page **59**