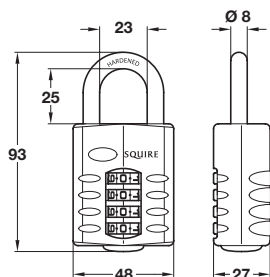


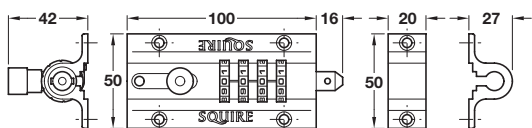
## Combination padlock, open shackle



- > For securing gates, vans, sheds, lorries, lockers, lock ups, garages, boats etc.
- > 4 wheel recodable combination
- > 4096 code variations
- > Push button to open
- > High corrosion resistance
- > Hardened steel open shackle, protective finish
- > Heavy duty steel body, zinc-plated with protective coating
- > Order qty: 1 pc

	Cat. No.
Combination padlock	911.60.089

## Combination locking bolt

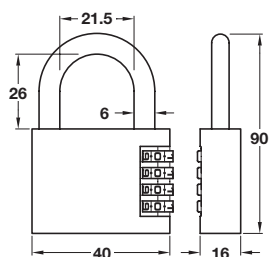


- > 4 wheel recodable combination
- > 10,000 code variations
- > Lockable in open and closed position
- > Patented
- > Security screws included
- > Die-cast
- > Order qty: 1 pc



Finish	Cat. No.
Blue powder coated	911.62.167

## ABUS 4 digit combination padlock, brass

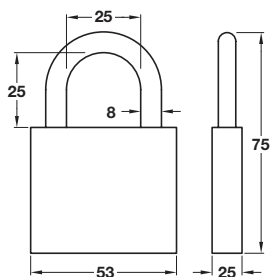


- > To secure bags, suitcases, jewel boxes, cash boxes, cupboards, lockers, tool boxes
- > Individually resettable 4 digit code operation and use
- > Brass lock body with steel shackle
- > Blister packed
- > Order qty: 1 pc



Size	Security rating*	Cat. No.
40 mm	4	482.01.715

## ABUS 180 IB/50 Marine 4 digit combination padlock, brass



- > Ideal for use in severe weather conditions (e.g. in coastal regions or ports, to secure goods on vehicles and boats in outdoor use)
- > Double bolted - shackle locked on both sides
- > Precision locking system with integrated protection against manipulation
- > Individually resettable 4 digit code operation and use
- > Includes change key for resetting code
- > Code must be jumbled to allow closure - prevents leaving opening code visible
- > Solid brass body, stainless steel shackle and rust-free inner components
- > Blister packed
- > Order qty: 1 pc



Size	Security rating*	Cat. No.
50 mm	5	482.01.714



- > \*ABUS Global Protection System has rated these locks from 1 to 10, where 10 is most secure
- > ABUS offer a lifetime guarantee, against faulty workmanship, on all padlocks