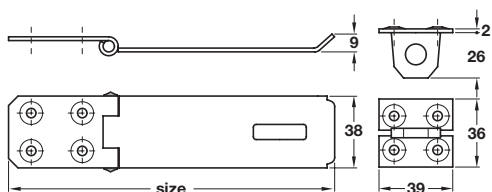
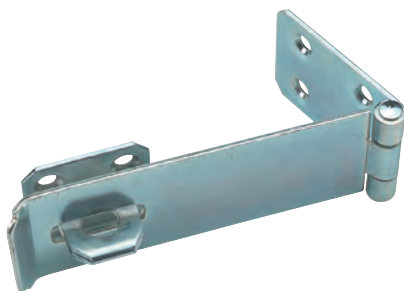


Safety hasp and staple



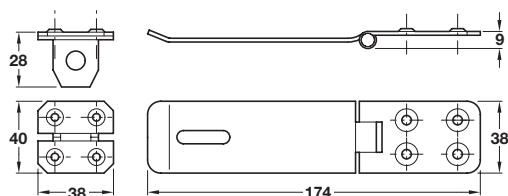
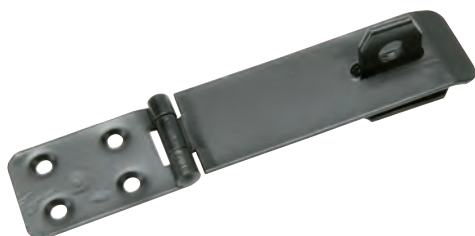
Note: ± 10 mm tolerance on dimensions

- > When fastened all screw holes are covered
- > Electro galvanised steel
- > Order fixing screws separately
- > Order qty: 1 pc



Size	Cat. No.
174 mm	911.63.016
212 mm	911.63.017

Safety hasp and staple



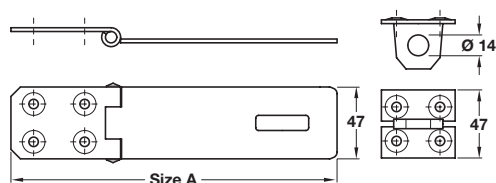
Note: ± 3 mm tolerance on dimensions

- > When fastened all screw holes are covered
- > Black antique finished steel
- > Order fixing screws separately
- > Order qty: 1 pc



Size	Cat. No.
174 mm	911.63.008

ABUS Hasp and staple, steel



- > Corrosion protected standard hasp and staple
- > Steel construction-basic security low risk of theft
- > Hidden fixings
- > Zinc-plated steel
- > Blister packed
- > Order qty: 1 pc



Size A	Cat. No.
95 mm	482.01.781
115 mm	482.01.782



ABUS offer a lifetime guarantee, against faulty workmanship, on all products