

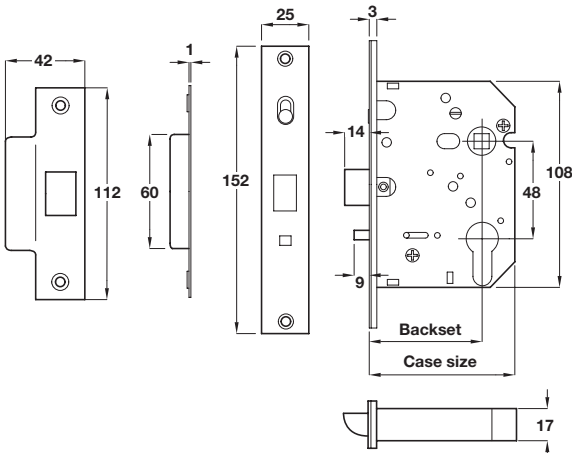
Mortice cylinder nightlatch case with holdback



Without holdback



With holdback



- > Latchbolt operated by lever handle inside and by single cylinder outside, or by cylinder and thumbturn only
- > Holdback version: Snib on forend. Push snib to hold back latch bolt.
- > Case: Epoxy powder coated steel, 17 mm wide
- > Forend: Square, 2 piece. Stainless steel or brass
- > Strike plate: Square, flat. Included. Stainless steel or brass
- > Latchbolt: Brass. Reversible
- > Anti-thrust: Plastic
- > Follower: 8 mm. For use with sprung or unsprung furniture
- > Holed for bolt through furniture at 38 mm centres
- > Order qty: 1 pc



Size	Satin stainless steel
Nightlatch case without holdback	
Backset 44 mm, case size 64 mm	911.23.414
Backset 57 mm, case size 76 mm	911.23.416
Nightlatch case with holdback	
Backset 44 mm, case size 64 mm	911.23.418
Backset 57 mm, case size 76 mm	911.23.420



Allow 2-4 mm gap between door and frame for anti-thrust to work properly



Order cylinders separately, see pages 65-77