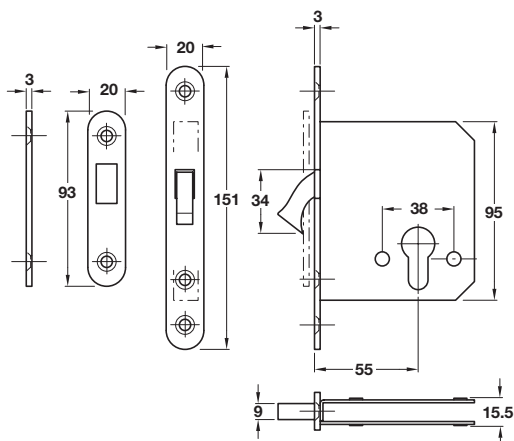
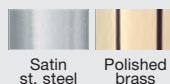


Mortice cylinder hook bolt lock case



- > Bolt operated by cylinder
- > Case: 15.5 mm wide
- > Forend: Radius. Stainless steel or brass
- > Strike plate: Square, flat. Included. Stainless steel or brass
- > Hook bolt: 20 mm throw
- > Order qty: 1 pc



Finish	Cat. No.
Backset 55 mm, case size 85 mm	
Satin stainless steel	911.26.330
Polished brass	911.26.338



- > Order cylinders separately, see pages **65-77**
- > Escutcheons are shown in **Section 1** from page **5**

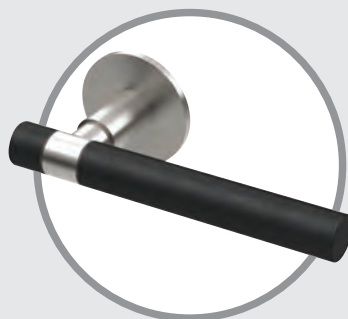
RELATED PRODUCTS



Stainless steel ball bearing butt hinge, 102 x 76 mm

Ideal for most applications, tested to BSEN1935.

- > Product shown is **926.90.390**
- > For full details see **Section 3** page **23**



Soft touch lever handles, grade 316 stainless steel

High quality UK manufactured grade 316 stainless steel handles.

- > Product shown is **902.21.813**
- > For full details see **Section 1** page **7**



Dorma TS 72 VBC overhead door closer

German efficiency in door controls.

- > Product shown is **931.06.519**
- > For full details see **Section 4** page **21**